

TE1FU Series Stainless Steel Cable Glands

Increased Safety, Flameproof, Restricted Breathing and Dust Locations
For Armored Cables.

NEC/CEC: Class I, Division 2, Groups A, B, C, D | Class II, Division 2, Groups E, F, G | Class III | Enclosure Type 4X | Ex d IIC | Ex e IIC | Ex nR II
ATEX/IECEx : Zones 1 and 2 – 20
Notable: UKEX, INMETRO, EAC Certified

Applications

- Cable gland for all types of armored cable certified for enclosures with the following protection modes:
 - Ex d: flameproof IIB or IIC
 - Ex e: increased safety.
 - Ex nR: restricted breathing.
 - Ex d: flameproof.
- Hazardous areas (gas and dust).
- Onshore and offshore.

Features

- Cable gland with elastomer seal for use in hazardous areas with all types of armored cable.
- Provides a gas tight seal permitting the compatibility of use with restricted breathing (Type "nR") equipment.
- Allows mechanical cable retention and earth continuity via the cable armor termination.
- Reversible armor cone and AnyWay clamping ring arrangement facilitates remote make off and enables the cable to be disconnected from the equipment.

Standard Materials

- Body: stainless steel
- Seal: halogen free thermoset elastomer

Options

- Aluminum: replace last digit 5 with 1
- Shroud, locknut, earth tag, entry thread seal, serrated washers, adaptors and reducers: see Cable Gland Accessories pages.

NEC/CEC Certifications and Compliances

- UL Standard 2225, 514B, 50
- CSA Standard: C22.2 No 0, 18, 25, 30, 94, 174, E60079-0, 1, 7
- cCSAus Certified: 1310517

ATEX/IECEx Certifications and Compliances

- Certification Type: Type TE1FU
 - Gas: Zones 1 and 2
 - Type of Protection: Ex db IIC Gb, Ex eb IIC Gb, Ex nR IIC Gc
 - Dust: Zone 20
 - Type of Protection: Ex ta IIIC Da
- Conforming to ATEX 2014/34/EU: Ⓢ II 2G 3G 1D
- Ambient Temperature: -60 °C to +130 °C (-76 °F to +266 °F)
- ATEX Certificate: CML 18ATEX1326X, CML 18ATEX4318X
- IECEx Certificate: IECEx CML 18.0183X
- Index of Protection according EN/IEC 60529: IP66, IP67, IP68
- Deluge Protection Compliance: DTS01:91

| Catalog Numbers | | | | | | |
|------------------|-----------------|-------------------|-----------------------|----------------|-----------------------|-----------------------|
| Cable Gland Size | Metric Thread C | Standard Metric ① | Standard NPT Thread C | Standard NPT ① | Optional NPT Thread C | Optional NPT Thread ① |
| 20S16 | M20 | 2016TE1FU5 | 1/2" | 2016TE1FU0505 | 3/4" | 2016TE1FU0755 |
| 20S | M20 | 20STE1FU5 | 1/2" | 20STE1FU0505 | 3/4" | 20STE1FU0755 |
| 20 | M20 | 20TE1FU5 | 1/2" | 20TE1FU0505 | 3/4" | 20TE1FU0755 |
| 25S | M25 | 25STE1FU5 | 3/4" | 25STE1FU0755 | 1" | 25STE1FU1005 |
| 25 | M25 | 25TE1FU5 | 3/4" | 25TE1FU0755 | 1" | 25TE1FU1005 |
| 32 | M32 | 32TE1FU5 | 1" | 32TE1FU1005 | 1-1/4" | 32TE1FU1255 |
| 40 | M40 | 40TE1FU5 | 1-1/4" | 40TE1FU1255 | 1-1/2" | 40TE1FU1505 |
| 50S | M50 | 50STE1FU5 | 1-1/2" | 50STE1FU1505 | 2" | 50STE1FU2005 |
| 50 | M50 | 50TE1FU5 | 2" | 50TE1FU2005 | 2-1/2" | 50TE1FU2505 |
| 63S | M63 | 63STE1FU5 | 2" | 63STE1FU2005 | 2-1/2" | 63STE1FU2505 |
| 63 | M63 | 63TE1FU5 | 2-1/2" | 63TE1FU2505 | 3" | 63TE1FU3005 |
| 75S | M75 | 75STE1FU5 | 2-1/2" | 75STE1FU2505 | 3" | 75STE1FU3005 |
| 75 | M75 | 75TE1FU5 | 3" | 75TE1FU3005 | 3-1/2" | 75TE1FU3505 |
| 90 | M90 | 90TE1FU5 | 3-1/2" | 90TE1FU3505 | 4" | 90TE1FU4005 |
| 100 | M100 | 100TE1FU5 | 3-1/2" | 100TE1FU3505 | 4" | 100TE1FU4005 |
| 115 | M115 | 115TE1FU5 | 4" | 115TE1FU4005 | 5" | 115TE1FU5005 |
| 130 | M130 | 130TE1FU5 | 5" | 130TE1FU5005 | — | — |

① Entry thread seal not supplied, see Cable Gland Accessories and Tools.

TE1FU Series Stainless Steel Cable Glands

Increased Safety, Flameproof, Restricted Breathing and Dust Locations
For Armored Cables.

NEC/CEC: Class I, Division 2, Groups A, B, C, D | Class II, Division 2, Groups E, F, G | Class III | Enclosure Type 4X | Ex d IIC | Ex e IIC | Ex nR II
ATEX/IECEx : Zones 1 and 2 – 20
Notable: UKEX, INMETRO, EAC Certified

UKEX Certifications

- UKEX Certificates : CML 21UKEX1258X, CML 21UKEX4259X

INMETRO Certifications

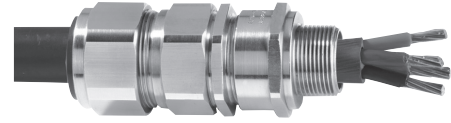
- INMETRO Certificate: TÜV 11.0374-X, for INMETRO marking, add B after TE1FU. Example: 20TE1FUB4

EAC Certifications

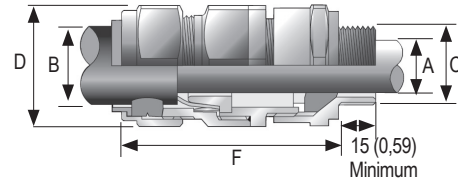
- EAC Certificate C-GB.A07.B.02514/20; for EAC marking, add U after TE1FU. Example: 20TE1FUU4

Other Certifications

- KCs, CCC, CCOE/PESO (Indes), ECAS (UAE), UkrSEPRO (Ukraine)
- Marine : LLOYDS, DNV, ABS



Dimensions in Millimeters (Inches)



| Cable Gland Size | Thread Length mm (in) E | | Cable Bedding mm (in) A | | Overall Cable Diameter mm (in) B | | Across Flats (mm (in) D Max. | Across Corners (mm (in) D Max. | Nominal Protrusion Length (mm (in) F | Optional PVC Shroud | Weight (kg (oz) |
|------------------|-------------------------|-------------|-------------------------|--------------|----------------------------------|--------------|------------------------------|--------------------------------|--------------------------------------|---------------------|-----------------|
| | Metric | NPT | Metric | NPT | Min. | Max. | | | | | |
| 20S16 | 15,0 (0,59) | 19,9 (0,78) | 3,1 (0,12) | 8,6 (0,34) | 6,1 (0,24) | 13,1 (0,52) | 24,0 (0,95) | 26,4 (1,04) | 57,3 (2,26) | PVC04 | 0,15 (5,29) |
| 20S | 15,0 (0,59) | 19,9 (0,78) | 6,1 (0,24) | 11,6 (0,46) | 9,5 (0,37) | 15,9 (0,63) | 24,0 (0,95) | 26,4 (1,04) | 57,3 (2,26) | PVC04 | 0,15 (5,29) |
| 20 | 15,0 (0,59) | 19,9 (0,78) | 6,5 (0,26) | 13,9 (0,55) | 12,5 (0,49) | 20,9 (0,82) | 30,5 (1,20) | 33,6 (1,32) | 61,2 (2,41) | PVC06 | 0,23 (8,11) |
| 25S | 15,0 (0,59) | 20,2 (0,80) | 11,1 (0,44) | 19,9 (0,78) | 14,0 (0,55) | 22,0 (0,87) | 37,5 (1,48) | 41,3 (1,63) | 74,0 (2,91) | PVC09 | 0,34 (11,99) |
| 25 | 15,0 (0,59) | 20,2 (0,80) | 11,1 (0,44) | 19,9 (0,78) | 18,2 (0,72) | 26,2 (1,03) | 37,5 (1,48) | 41,3 (1,63) | 74,0 (2,91) | PVC09 | 0,34 (11,99) |
| 32 | 15,0 (0,59) | 25,0 (0,98) | 17,0 (0,67) | 26,2 (1,03) | 23,7 (0,93) | 33,9 (1,33) | 46,0 (1,81) | 50,6 (1,99) | 78,2 (3,08) | PVC11 | 0,55 (19,40) |
| 40 | 15,0 (0,59) | 25,6 (1,01) | 22,0 (0,87) | 32,1 (1,26) | 27,9 (1,10) | 40,4 (1,59) | 55,0 (2,17) | 60,5 (2,38) | 81,6 (3,21) | PVC15 | 0,79 (27,87) |
| 50S | 15,0 (0,59) | 26,1 (1,03) | 29,5 (1,16) | 38,1 (1,50) | 35,2 (1,39) | 46,7 (1,84) | 60,0 (2,36) | 66,0 (2,60) | 88,1 (3,47) | PVC18 | 1,00 (35,27) |
| 50 | 15,0 (0,59) | 26,9 (1,06) | 35,6 (1,40) | 44,0 (1,73) | 40,4 (1,59) | 53,0 (2,09) | 70,1 (2,76) | 77,1 (3,04) | 91,2 (3,59) | PVC21 | 1,37 (48,33) |
| 63S | 15,0 (0,59) | 26,9 (1,06) | 40,1 (1,58) | 49,9 (1,96) | 45,6 (1,80) | 59,4 (2,34) | 75,0 (2,96) | 82,5 (3,25) | 90,5 (3,56) | PVC23 | 1,50 (52,91) |
| 63 | 15,0 (0,59) | 39,9 (1,57) | 47,2 (1,86) | 55,9 (2,20) | 54,6 (2,15) | 65,8 (2,59) | 80,0 (3,15) | 88,0 (3,47) | 90,3 (3,56) | PVC25 | 1,56 (55,03) |
| 75S | 15,0 (0,59) | 39,9 (1,57) | 52,8 (2,08) | 61,9 (2,44) | 59,0 (2,32) | 72,0 (2,83) | 90,0 (3,55) | 99,0 (3,90) | 104,7 (4,12) | PVC28 | 2,45 (86,42) |
| 75 | 15,0 (0,59) | 41,5 (1,63) | 59,1 (2,33) | 67,9 (2,67) | 66,7 (2,63) | 78,4 (3,09) | 100,0 (3,94) | 110,0 (4,33) | 110,8 (4,36) | PVC30 | 3,15 (111,11) |
| 90 | 24,0 (0,94) | 42,8 (1,69) | 66,6 (2,62) | 78,6 (3,09) | 76,2 (3,00) | 90,3 (3,56) | 115,0 (4,53) | 126,5 (4,98) | 135,5 (5,33) | PVC32 | 4,62 (162,97) |
| 100 | 24,0 (0,94) | 42,8 (1,69) | 76,0 (2,99) | 90,9 (3,58) | 86,1 (3,39) | 101,4 (3,99) | 127,0 (5,00) | 139,7 (5,50) | 126,8 (4,99) | LSF33 | 4,95 (174,61) |
| 115 | 24,0 (0,94) | 44,0 (1,73) | 86,0 (3,39) | 97,9 (3,85) | 101,5 (4,00) | 110,2 (4,34) | 138,0 (5,44) | 151,8 (5,98) | 157,5 (6,20) | LSF34 | 7,60 (268,08) |
| 130 | 24,0 (0,94) | 46,8 (1,84) | 97,0 (3,82) | 114,9 (4,52) | 110,2 (4,34) | 123,2 (4,85) | 157,0 (6,19) | 172,7 (6,80) | 164,5 (6,48) | LSF35 | 8,73 (307,94) |