

# PX-REX (PXSS2K-REX) Series Liquid Resin Barrier Type Cable Connector

Increased Safety, Flameproof, Restricted Breathing and Dust Locations  
For Unarmoured Cables.

NEC/CEC: Class I, Division 2, Groups A, B, C, D | Class II, Division 1 and 2, Groups E, F, G | Class III, Division 1 and 2 | Type 4X: Oil Resistant II  
ATEX/IECEx : Zones 1 and 2 – 20  
Notable: UKEX, INMETRO, EAC Certified

## Applications

- Flame proof Class I cable connector suitable for unarmored, extra hard usage, tray (TC) and shipboard cables.
- Certified for enclosures with the following protection modes:
  - Ex d: flameproof IIB or IIC
  - Ex e: increased safety.
  - Ex nR: restricted breathing.
  - Ex d: flameproof.
- Hazardous areas (gas and dust).
- Onshore and offshore.

## Features

- Utilizes RapidEx high speed liquid resin sealing compound included with each gland.
- The gland utilizes a liquid pour resin seal that vastly reduces installation time and associated costs. This solution is particularly effective on multicore cables where traditional compound is difficult and time consuming to apply.
- Connector provides an environmental seal on the cable jacket and an explosionproof liquid resin barrier seal around the cable inner cores.

## Standard Materials

- Connector: brass fully nickel plated
- Outer seal nut: consists of an elastomeric seal and nylon skid washer
- High speed liquid resin sealing compound

## Options

- Aluminum: replace last digit 5 with 1
- 316L stainless steel: replace last digit 5 with 4
- Shroud, locknut, earth tag, entry thread seal, serrated washers, adaptors and reducers: see Cable Gland Accessories pages

## NEC/CEC Certifications and Compliances

- UL Standard: UL 514B Ed 5, UL 50 Ed 11, UL 2225 Ed 4, UL60079-0:07
- CSA Standard: CSA-C22.2 No 0, 18,25,30,94,174; CSA-E60079-0,1,7,31; CSA-E61241-1-1, Part 1-1
- cCSAus Certified: 2288626

## ATEX/IECEx Certifications and Compliances

- Certification Type: Type PX\*\*
  - Gas: Zones 1 and 2
    - Type of Protection: Ex db IIC Gb, Ex eb IIC Gb, Ex nR IIC Gc
  - Dust: Zone 20
    - Type of Protection: Ex ta IIIC Da
- Conforming to ATEX 2014/34/EU: Ⓢ II 2G 3G 1D
- Ambient Temperature: -60 °C to +85 °C (-76 °F to +185 °F)
- ATEX Certificate: CML 18ATEX1325X, CML 18ATEX4317X
- IECEx Certificate: IECEx CML 18.0182X
- Index of Protection according EN/IEC 60529: IP66, IP67, IP68
- Deluge Protection Compliance: DTS01:91

Cable Gland Size	Catalog Numbers †						Résine de remplacement	Maximum Number of Cores
	Metric Thread C	Standard Metric ①	Standard NPT Thread C	Standard NPT ①	Optional NPT Thread C	Optional NPT Thread ①		
20S16	M20	2016PXREX5X	1/2	2016PXREX0505X	3/4	2016PXREX0755X	RAPIDEX30P	21
20S	M20	20SPXREX5X	1/2	20SPXREX0505X	3/4	20SPXREX0755X	RAPIDEX30P	21
20	M20	20PXREX5X	1/2	20PXREX0505X	3/4	20PXREX0755X	RAPIDEX30P	21
20L	M21	20LPXREX5X	1/2	20LPXREX0505X	3/4	20LPXREX0755X	RAPIDEX30P	21
25	M25	25PXREX5X	3/4	25PXREX0755X	1	25PXREX1005X	RAPIDEX30P	30
32	M32	32PXREX5X	1	32PXREX1005X	1-1/4	32PXREX1255X	RAPIDEX30P	38
32L	M32	32LPXREX5X	1	32LPXREX1005X	1-1/4	32LPXREX1255X	RAPIDEX30P	38
40	M40	40PXREX5X	1-1/4	40PXREX1255X	1-1/2	40PXREX1505X	RAPIDEX30P	59
50S	M50	50SPXREX5X	1-1/2	50SPXREX1505X	2	50SPXREX2005X	RAPIDEX80P	89
50	M50	50PXREX5X	2	50PXREX2005X	2-1/2	50PXREX2505X	RAPIDEX80P	115
63S	M63	63SPXREX5X	2	63SPXREX2005X	2-1/2	63SPXREX2505X	2RAPIDEX80P	115
63	M63	63PXREX5X	2-1/2	63PXREX2505X	3	63PXREX3005X	2RAPIDEX80P	115
75S	M75	75SPXREX5X	2-1/2	75SPXREX2505X	3	75SPXREX3005X	2RAPIDEX80P	140
75	M75	75PXREX5X	3	75PXREX3005X	3.5	75PXREX3505X	3RAPIDEX80P	140
90	M90	90PXREX5X	3-1/2	90PXREX3505X	4	90PXREX4005X	3RAPIDEX80P	140

† For orders in Europe, remove -X.

① Entry thread seal not supplied, see Cable Gland Accessories and Tools.

# PX-REX (PXSS2K-REX) Series Liquid Resin Barrier Type Cable Connector

Increased Safety, Flameproof, Restricted Breathing and Dust Locations  
For Unarmoured Cables.

NEC/CEC: Class I, Division 2, Groups A, B, C, D | Class II, Division 1 and 2, Groups E, F, G | Class III, Division 1 and 2 | Type 4X: Oil Resistant II  
ATEX/IECEx : Zones 1 and 2 – 20  
Notable: UKEX, INMETRO, EAC Certified

## UKEX Certifications

- UKEX Certificates: CML 21UKEX1214X, CML 21UKEX4215X

## INMETRO Certifications

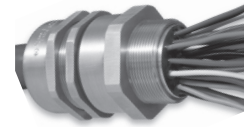
- INMETRO Certificate: TUV 12.2073X, for INMETRO marking, add B after PXREX. Example: 20PXREXB5

## EAC Certifications

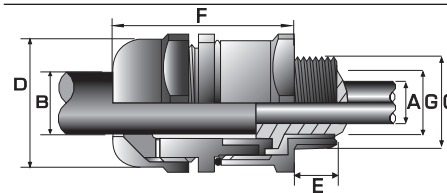
- EAC Certificate: C-GB.A07.B.04595/22; for EAC marking, add U after PXREX. Example: 20PXREXU5

## Other Certifications

- KCs, CCC, CCOE/PESO (India), ECAS (UAE), UkrSEPRO (Ukraine)
- Marine Approval: LLOYDS, DNV, ABS



Dimensions in Millimeters (Inches)



Cable Gland Size	Thread Length mm (in) E		Cable Bedding mm (in) A		Overall Cable Diameter mm (in) B		Across Flats (mm (in) D Max.	Across Corners (mm (in) D Max.	Nominal Protrusion Length (mm (in) F	Optional PVC Shroud	Weight (kg (oz)
	Metric	NPT	Metric	NPT	Min.	Max.					
20S16	15.0(0.59)	19.9(0.78)	8.6(0.34)	8.60(0.34)	6.1(0.24)	13.1(0.52)	30.0(1.18)	33.0(1.30)	53.1(2.09)	PVC06	0.20(7.06)
20S	15.0(0.59)	19.9(0.78)	11.7(0.46)	11.70(0.46)	9.5(0.37)	15.9(0.63)	30.0(1.18)	33.0(1.30)	53.1(2.09)	PVC06	0.20(7.06)
20	15.0(0.59)	19.9(0.78)	12.6(0.50)	12.90(0.50)	12.5(0.49)	20.9(0.82)	30.0(1.18)	33.0(1.30)	54.2(2.13)	PVC06	0.20(7.06)
20L	15.0(0.59)	19.9(0.78)	12.6(0.50)	12.90(0.50)	14.0(0.55)	22.0(0.87)	30.0(1.18)	33.0(1.30)	54.2(2.13)	PVC06	0.20(7.06)
25	15.0(0.59)	20.2(0.80)	17.5(0.69)	17.90(0.69)	18.2(0.72)	26.2(1.03)	36.0(1.42)	39.6(1.56)	60.0(2.36)	PVC09	0.33(11.64)
32	15.0(0.59)	25.0(0.98)	23.6(0.93)	23.90(0.93)	23.7(0.93)	33.9(1.33)	41.0(1.62)	45.1(1.78)	61.1(2.41)	PVC10	0.39(13.76)
32L	15.0(0.59)	25.0(0.98)	23.6(0.93)	23.90(0.93)	27.9(1.10)	40.4(1.59)	41.0(1.62)	45.1(1.78)	61.1(2.41)	PVC10	0.39(13.76)
40	15.0(0.59)	25.6(1.01)	30.0(1.18)	30.30(1.18)	35.2(1.39)	46.7(1.84)	50.0(1.97)	55.0(2.17)	62.4(2.46)	PVC13	0.56(19.75)
50S	15.0(0.59)	26.1(1.03)	36.6(1.44)	36.90(1.44)	40.4(1.59)	53.0(2.09)	55.0(2.17)	60.5(2.38)	65.2(2.57)	PVC15	0.66(23.28)
50	15.0(0.59)	26.9(1.06)	41.0(1.61)	41.30(1.61)	45.6(1.80)	59.4(2.34)	60.0(2.36)	66.0(2.60)	67.6(2.66)	PVC18	0.73(25.75)
63S	15.0(0.59)	26.9(1.06)	47.9(1.89)	48.40(1.89)	54.6(2.15)	65.8(2.59)	70.0(2.76)	77.0(3.03)	71.1(2.80)	PVC21	1.07(37.74)
63	15.0(0.59)	39.9(1.57)	53.7(2.11)	54.00(2.11)	59.0(2.32)	72.0(2.83)	75.0(2.96)	82.5(3.25)	70.4(2.77)	PVC23	1.06(37.39)
75S	15.0(0.59)	39.9(1.57)	59.9(2.36)	60.20(2.36)	66.7(2.63)	78.4(3.09)	80.0(3.15)	88.0(3.47)	75.3(2.97)	PVC25	1.30(45.86)
75	15.0(0.59)	41.5(1.63)	64.3(2.53)	64.20(2.53)	76.2(3.00)	90.3(3.56)	85.0(3.35)	93.5(3.68)	74.9(2.95)	PVC27	1.30(45.86)
90	20.0(0.79)	42.8(1.69)	75.3(2.96)	75.60(2.96)	86.1(3.39)	101.4(3.99)	108.0(4.26)	118.8(4.68)	94.8(3.73)	PVC31	3.02(106.53)

Hazardous Location Fittings