

# DB Series Drain and Breather Valves

Increased Safety. Flameproof.

ATEX/IECEx: Zone 1 and 21 | II 2 GD | Ex eb IIC Gb | Ex tb IIIC Db | IP66

## Applications



- Flameproof Bleed Valve
  - Used to drain condensation from inside enclosures and boxes.
- Increased Safety Breather Drain
  - Ensures that the condensation is evacuated from the lower section of the enclosures and limits the “pumping” effect in the upper section.

## Standard Materials

- Bleed valve: nickel plated brass or stainless steel
- Breather/drain: polyamide, brass or stainless steel

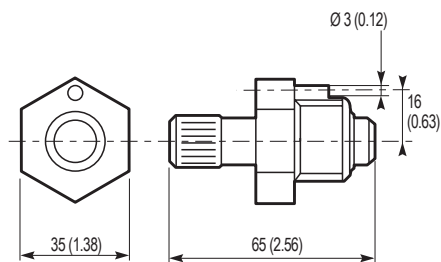
## ATEX/IECEx Certifications and Compliances

- Certification Type: DP-E
  - Gas: Zones 1
    - Type of Protection: Ex eb IIC Gb
  - Dust: Zone 21
    - Type of Protection: Ex tb IIIC Db
- Conforming to ATEX 2014/34 EU: II 2G 2D
- Ambient Temperature: -50 °C to +85 °C (-58 °F to +185 °F)
- ATEX Certificate: ITS16ATEX101338X
- IECEx Certificate: IECEx ITS 16.0014X
- Index of Protection according EN/IEC 60529: IP66

	Metric Thread	Material	Weight kgs (lbs)	Volume dm <sup>3</sup> (in <sup>3</sup> )	Pack	Catalog Number
<b>Flameproof Bleed Valve</b>						
<i>To be used only with our range of flameproof enclosure. The ATEX certification is included in our Exd enclosure's certification.</i>						
	M20	Nickel plated brass	0.10 (0.22)	0.01 (0.61)	1	DBD20NB
	M20	Stainless steel	0.20 (0.44)	0.33 (20.14)	1	DBD20S
<b>Flameproof Breather</b>						
<i>To be used only with our range of flameproof enclosure. The ATEX certification is included in our Exd enclosure's certification.</i>						
	M20	Nickel plated brass	0.20 (0.44)	0.33 (20.14)	1	DBDB20NB
	M20	Stainless steel	0.20 (0.44)	0.33 (20.14)	1	DBDB20S
<b>Increased Safety Combination Drain and Breather — Type DP-E</b>						
	M20	Polyamide	0.20 (0.44)	0.01 (0.61)	1	DBE20P
	M20	Brass	0.20 (0.44)	0.01 (0.61)	1	DBE20B
	M20	Stainless steel	0.20 (0.44)	0.01 (0.61)	1	DBE20S

## Dimensions in Millimeters (Inches)

### Flameproof Bleed Valve



### Increased Safety Drain and Breather

