

ATX™ DPD Series Distribution Panelboards

Flameproof

ATEX/IECEx: Zones 1 and 2 – 21 and 22

Applications

- Protection and control of electrical equipment in hazardous areas where ignitable vapors, gases or highly combustible dusts are present.
- For installation in:
 - Chemical plants
 - Petrochemical plants
 - Refineries
 - Other process industries in Zone 1 and 2 and Zone 21 and 22
- Lighting panelboards are available in 6, 12, 18 and 24 circuits.
- Heat tracing panelboards are available in 6, 12, 18 and 20 circuits.

Features

- Available versions:
 - 3- or 4-Pole isolator switch or main breaker.
 - 1, 2, 3, 4 and 1+N poles branch circuit breakers.
 - Branch circuit breaker available with B, C or D tripping curve.
 - GFI branch circuit breaker available with B, C or D tripping curves except for 1+N poles.
- Isolator and breaker handles included as standard, can be padlocked in OFF position.
- Copper bus bar as standard.
- Fully prewired on outgoing terminal block.
- M8 earth-crossing terminal.
- Hinged door.
- 4 fixing lugs.
- Cable glands and plugs to be ordered separately.

Standard Materials

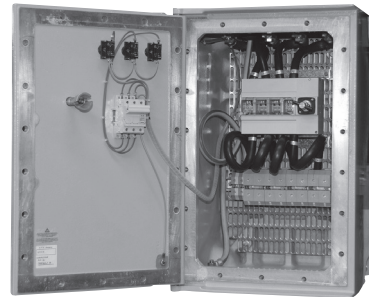
- Housing: gray marine grade aluminum alloy
- Hardware: stainless steel
- Bus bar: copper

Options

- Other rating and tripping curves.
- Other voltage.
- Indirect cable entries available through Ex e connection enclosure.
- Switch rack assembly.

ATEX/IECEx Certifications and Compliances

- Certification Type: CF
 - Gas: Zone 1 and 2
 - Conforming to ATEX 2014/34 EU: Ⓢ II 2 G
 - Type of Protection: Ex d IIB
 - Temperature Class: T6 to T4
- Dust: Zones 21 and 22
 - Conforming to ATEX 2014/34 EU: Ⓢ II 2 D
 - Type of Protection: Ex tD A21
 - Surface Temperature: T80 °C to T130 °C (T176 °F to T266 °F)
- Ambient Temperature: CF70B: -20 °C to +55 °C (-4 °F to +131 °F), CF50B: -40 °C to +55 °C (-40 °F to +131 °F), CF60B: -50 °C to +55 °C (-58 °F to +131 °F)
- ATEX Certificate: LCIE 02 ATEX 6057X
- IECEx Certificate: IECEx LCI 08.023X
- Index of Protection according EN/IEC 60529: IP66

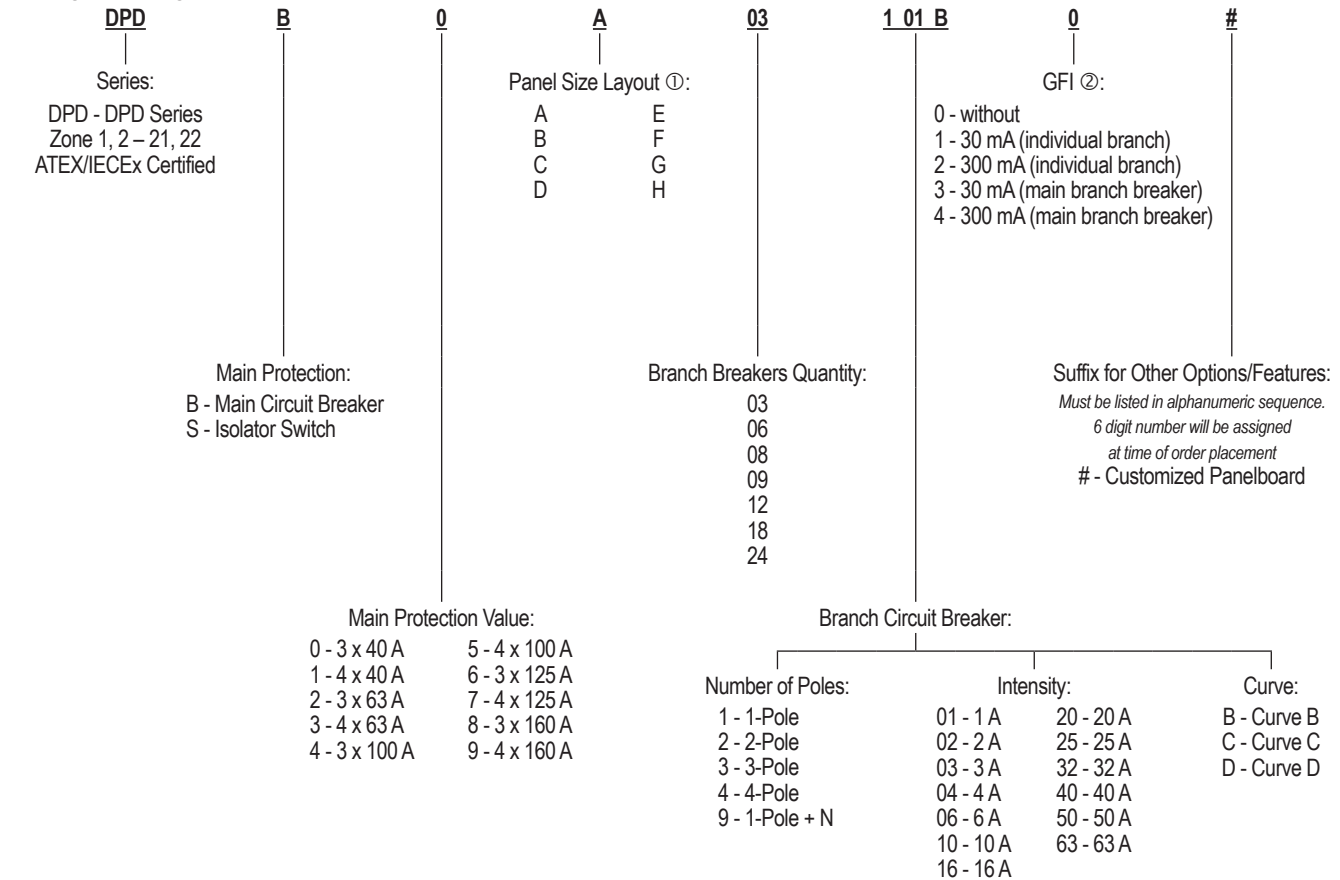


ATX™ DPD Series Distribution Panelboards

Flameproof

ATEX/IECEX: Zones 1 and 2 – 21 and 22

Catalog Numbering Guide



Distribution Equipment

① See DPD Series Distribution Panelboard Dimensions page for panel size dimensions.

② 1+N pole is not for use with GFI.

ATX™ DPD Series Distribution Panelboards

Flameproof

ATEX/IECEx: Zones 1 and 2 – 21 and 22

Distribution Panelboard with Branch Circuit Breakers (for Lighting Circuits, etc.)

4-pole main isolator switch and 2-pole Branch Circuit Breakers Tripping Curve C wired on terminals.

Type	Main Switch	Branch Circuit Breakers 2-Poles - Curve C		Layout Panel	Cable Entries	Volume dm ³ (in ³)	Weight kg (lb)	Catalog Number
		Quantity	Rating					
CF50B	4 x 63 A	6	2P 16 A	A	1 x M32 - 6 x M20	100 (6102)	240 (529)	DPDS3A06216C0
CF60B	4 x 63 A	12	2P 16 A	B	1 x M32 - 12 x M20	150 (9154)	378 (833)	DPDS3B12216C0
CF70B	4 x 125 A	18	2P 16 A	C	1 x M40 - 18 x M20	180 (10984)	382 (942)	DPDS7C18216C0
CF70B	4 x 160 A	24	2P 16 A	D	1 x M50 - 24 x M20	180 (10984)	382 (942)	DPDS9D24216C0

Distribution Panelboard with GFI Branch Circuit Breakers (for Heat Tracing Circuits, etc.)

4-pole main isolator switch and 1-pole + N branch circuit breakers with GFI Branch Circuit Breakers Tripping Curve C wired on terminals.

Type	Main Switch	Branch Circuit Breakers N by 2-Poles - Curve C		Layout Panel	Cable Entries	Volume dm ³ (in ³)	Weight kg (lb)	Catalog Number
		Quantity	Rating					
CF50B	4 x 63 A	6	16 A/30 mA	E	1 x M32 - 6 x M20	100 (6102)	240 (529)	DPDS3E06916C1
CF60B	4 x 63 A	12	16 A/30 mA	F	1 x M32 - 12 x M20	150 (9154)	378 (833)	DPDS3F12916C1
CF70B	4 x 125 A	18	16 A/30 mA	G	1 x M40 - 18 x M20	180 (10984)	382 (942)	DPDS7G18916C1
CF70B	4 x 160 A	20	16 A/30 mA	H	1 x M50 - 20 x M20	180 (10984)	382 (942)	DPDS9H20916C1

Distribution Panelboard with GFI Branch Circuit Breakers (for Heat Tracing Circuits, etc.)

4-pole main isolator switch and 1-pole + N branch circuit breakers with GFI Branch Circuit Breakers Tripping Curve B wired on terminals.

Type	Main Switch	Branch Circuit Breakers N by 2-Poles - Curve B		Layout Panel	Cable Entries	Volume dm ³ (in ³)	Weight kg (lb)	Catalog Number
		Quantity	Rating					
CF50B	4 x 63 A	6	16 A/30 mA	E	1 x M32 - 6 x M20	100 (6102)	240 (529)	DPDS3E06916B1
CF60B	4 x 63 A	12	16 A/30 mA	F	1 x M32 - 12 x M20	150 (9154)	378 (833)	DPDS3F12916B1
CF70B	4 x 125 A	18	16 A/30 mA	G	1 x M40 - 18 x M20	180 (10984)	382 (942)	DPDS7G18916B1
CF70B	4 x 160 A	20	16 A/30 mA	H	1 x M50 - 20 x M20	180 (10984)	382 (942)	DPDS9H20916B1

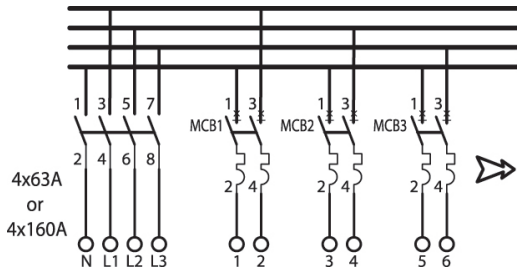
ATX™ DPD Series Distribution Panelboards

Flameproof

ATEX/IECEx: Zones 1 and 2 – 21 and 22

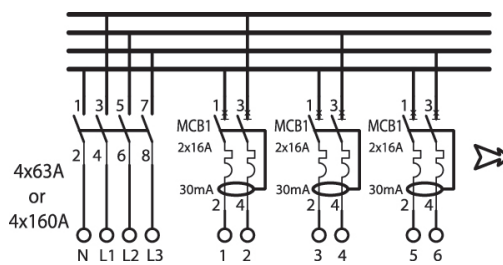
Wiring Diagram

Branch Circuit Breaker Versions



4 x 63 A or 4 x 125 A or 4 x 160 A

GFI Branch Circuit Breaker Versions



Technical Data

Main Contacts	Incoming			GFI Branch Circuit Breaker Outgoing
	63 Amps	125 Amps	160 Amps	16 A
Rated Insulation Voltage (Ui)	690 V	800 V	800 V	400 Vac
Rated Operating Voltage (Ue)	415 V/500 V/690 V	415 V/500 V/690 V	415 V/500 V/690 V	230/400 Vac
Rated Operating Current (Ie)	63 A/63 A/40 A	125 A	160 A/160 A/125 A	16 A/30 mA
Rated Surge Voltage (Uimp)	8 kV	8 kV	8 kV	4 kV
Short Circuit Resistance (Icu)	50 kA (with fuse)	63 kA (with fuse)	80 kA (with fuse)	10 kA/400 V IEC 947.2
Switching Capacity AC 21 A	415 V	63 A	125 A	—
	500 V	63 A	125 A	—
	690 V	63 A	125 A	—
Switching Capacity AC 22 A	415 V	63 A	125 A	—
	500 V	63 A	125 A	—
	690 V	40 A	80 A	—
Switching Capacity AC 23 A	415 V	63 A/30 kW	125 A/55 kW	—
	500 V	63 A/30 kW	100 A/55 kW	—
	690 V	40 A/30 kW	80 A/75 kW	—
Termination (Flexible)	4 to 35 mm ² (0.006 to 0.054 in ²)	4 to 50 mm ² (0.006 to 0.078 in ²)	4 to 50 mm ² (0.006 to 0.078 in ²)	0.5 to 4 mm ² (0.0008 to 0.006 in ²)
Termination (Solid)	50 mm ² (0.078 in ²)	70 mm ² 0.109 in ²)	70 mm ² (0.109 in ²)	1.5 to 6 mm ² (0.002 to 0.009 in ²)

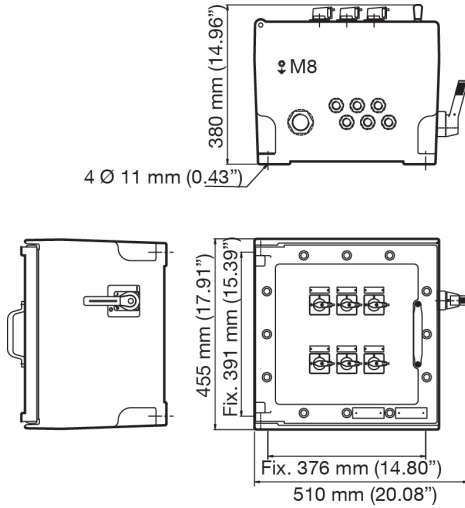
ATX™ DPD Series Distribution Panelboards

Flameproof

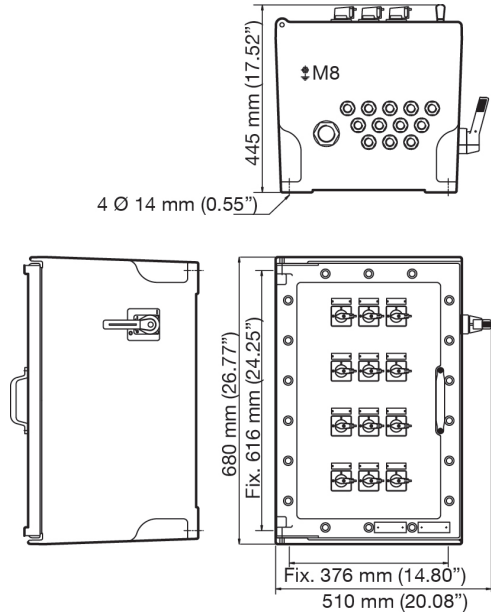
ATEX/IECEx: Zones 1 and 2 – 21 and 22

Dimensions in Millimeters (Inches) — Branch Circuit Breaker Version

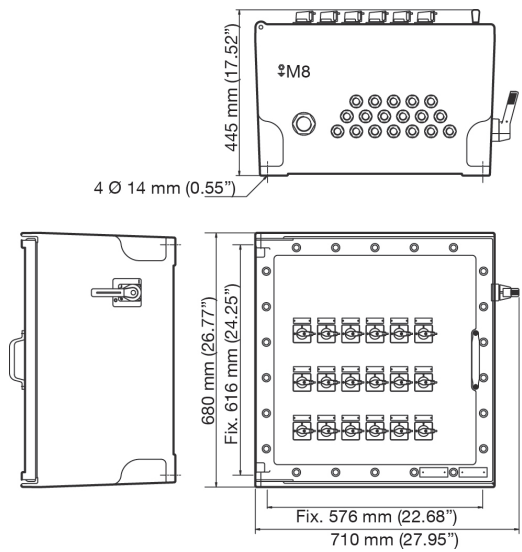
Layout Panel A



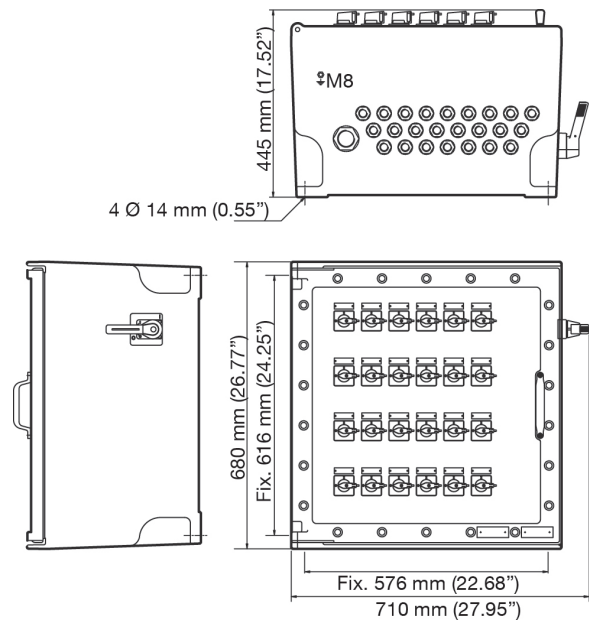
Layout Panel B



Layout Panel C



Layout Panel D



Distribution Equipment

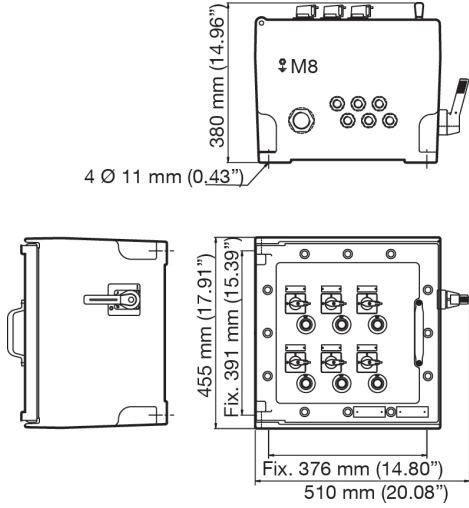
ATX™ DPD Series Distribution Panelboards

Flameproof

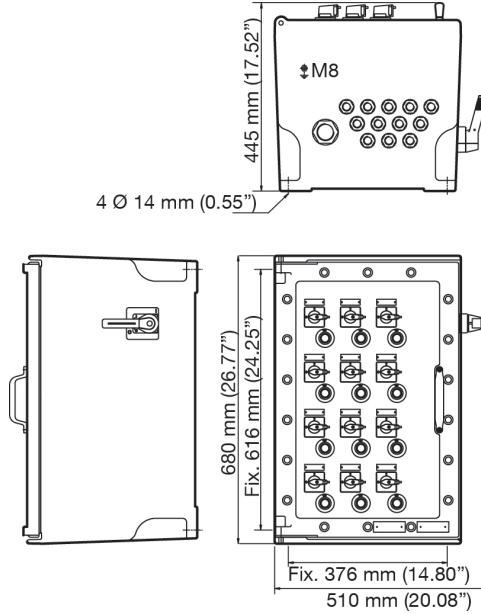
ATEX/IECEx: Zones 1 and 2 – 21 and 22

Dimensions in Millimeters (Inches) — GFI Branch Circuit Breaker Version

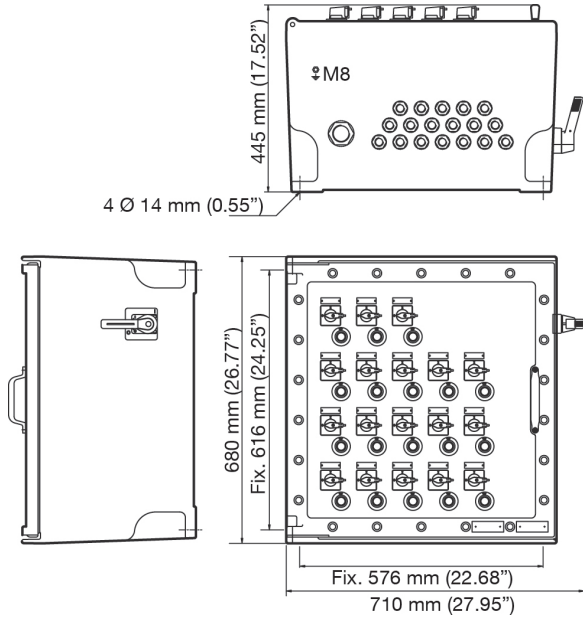
Layout Panel E



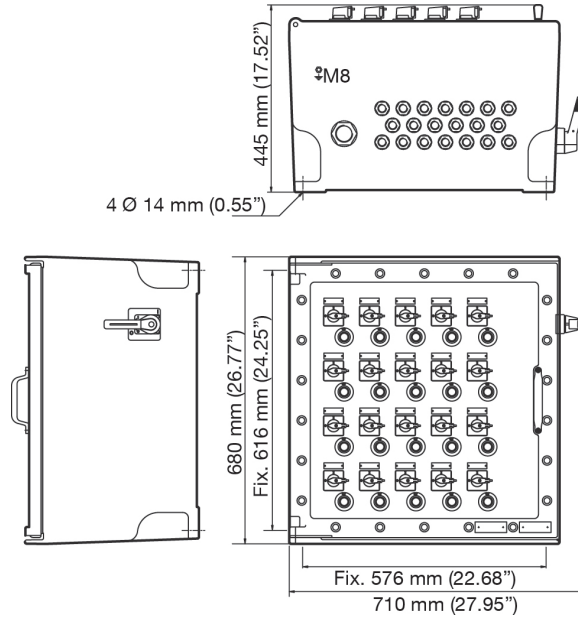
Layout Panel F



Layout Panel G



Layout Panel H



Distribution Equipment