

Unicode™ 2 Components | Push Buttons

Components for Increased Safety Enclosures

NEC/CEC: Class I, Division 2, Groups A, B, C, D | Class I, Zones 1, AEx de IIC | Class I, Zone1, AEx e IIC | Class II, Division 2, Groups F, G | Class III | Type 4X | IP66
 ATEX/IECEX: Zones 1 and 2 – 21 and 22
 Notable: UKEX, INMETRO Certified

Features

- Can be equipped with up to three Unicode 2 Series Contact Blocks (UCB) Series contact blocks.
- ATEX, IECEX, cCSAus Certified
- Available in TS35 rail mounted or panel mounted.

Standard Materials

- Body: polyamide
- Seal: Ethylene-propylene-diene-monomer (M-class) rubber (EPDM)

NEC/CEC Certifications and Compliances

- Certification Type: TCe
 - Operating Temperature: -40 °C to +60 °C (-40 °F to +140 °F)
 - Ingress Protection (solid and liquid): IP66 and Type 4X ①
 - CAN/CSA Standards: C22.2 No. 0-M91, No. 14-05, No. 94-M91, No. 213-M1987, No. 60079-0:07, No. 60079-1:07, No. 60529:05, E60079-7-03, E61241-1-1:02
 - UL Standards: UL 508, UL 50E, UL 60079-0, UL 60079-1, UL 60079-7
 - Other Standards: ANSI/ISA 12.12.01-2011, ANSI/ISA 61241-0 (12.10.02)-2006, ANSI/ISA 61241-1(12.10.03)-2006
 - CSA Listed: 025875

ATEX/IECEX Certifications and Compliances

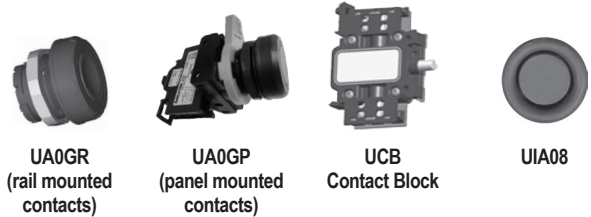
- Certification Type: TCe
 - Gas: Zone 1 and 2
 - Conforming to ATEX 2014/34/EU: Ⓢ II 2 G
 - Type of Protection: Ex eb IIC Gb
 - Dust: Zone 21 and 22
 - Conforming to ATEX 2014/34/EU: Ⓢ II 2 D
 - Type of Protection: Ex tb IIIC Db
- Service Temperature: -40 °C to +60 °C (-40 °F to +140 °F)
- ATEX Certificate: LCIE 09 ATEX 3010U
- IECEX Certificate: IECEX LCI 09.0011U
- Index of Protection according EN/IEC 60529: IP66
- Impact Resistance (shock): IK10

UKEX Certifications

- UKEX Certificate: CML21UKEX3196U

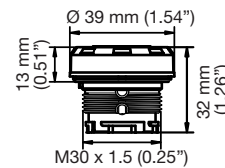
INMETRO Certifications

- INMETRO Certificate: BVC 10.0044-U

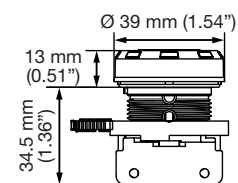


Dimensions in Millimeters (Inches)

Rail Mounted Contacts



Panel Mounted Contacts



① Overall hazardous location and ingress protection rating depends on the rating of the optional certified components used.

Unicode™ 2 Components | Push Buttons

Components for Increased Safety Enclosures

NEC/CEC: Class I, Division 2, Groups A, B, C, D | Class I, Zones 1, AEx de IIC | Class I, Zone1, AEx e IIC | Class II, Division 2, Groups F, G | Class III | Type 4X | IP66
ATEX/IECEx: Zones 1 and 2 – 21 and 22
Notable: UKEX, INMETRO Certified

| | Weight in kg (lbs) | | Volume dm ³ (in ³) | | Pack | Catalog Number | |
|---|--------------------|---------------|---|---------------|------|----------------|---------------|
| | Rail Mounted | Panel Mounted | Rail Mounted | Panel Mounted | | Rail Mounted | Panel Mounted |
| Spring Return - Push Button (contact block to be ordered separately) For legend plates, guards and blanking plugs see accessories pages. | | | | | | | |
| Red + Green | 0.03 (0.06) | 0.05 (0.11) | 0.06 (3.66) | 0.17 (10.37) | 1 | UA0RGR | UA0RGP |
| Green | 0.03 (0.06) | 0.05 (0.11) | 0.06 (3.66) | 0.17 (10.37) | 1 | UA0GR | UA0GP |
| Red | 0.03 (0.06) | 0.05 (0.11) | 0.06 (3.66) | 0.17 (10.37) | 1 | UA0RR | UA0RP |
| White | 0.03 (0.06) | 0.05 (0.11) | 0.06 (3.66) | 0.17 (10.37) | 1 | UA0WR | UA0WP |
| Blue | 0.03 (0.06) | 0.05 (0.11) | 0.06 (3.66) | 0.17 (10.37) | 1 | UA0BR | UA0BP |
| Yellow | 0.03 (0.06) | 0.05 (0.11) | 0.06 (3.66) | 0.17 (10.37) | 1 | UA0YR | UA0YP |
| Black | 0.03 (0.06) | 0.05 (0.11) | 0.06 (3.66) | 0.17 (10.37) | 1 | UA0NR | UA0NP |
| 1-Pole Contact Blocks | | | | | | | |
| 1 x NO | 0.032 (0.071) | | 0.06 (3.66) | | 1 | UCB5R | UCB5P |
| 1 x NC | | | | | | UCB9R | UCB9P |
| Spare Parts | | | | | | | |
| Rail to panel mounted conversion adaptor | 0.02 (0.04) | | 0.08 (4.88) | | 1 | | UPMA |

| Marking | Color | Weight kg (lb) | Volume dm ³ (in ³) | Pack | Catalog Number |
|----------------------------------|--------|----------------|---|------|----------------|
| Set of Five Spare Inserts | | | | | |
| (unmarked) | Green | 0.01 (0.02) | 0.01 (0.61) | 1 | UIAG |
| (unmarked) | Red | 0.01 (0.02) | 0.01 (0.61) | 1 | UIAR |
| (unmarked) | Yellow | 0.01 (0.02) | 0.01 (0.61) | 1 | UIAY |
| (unmarked) | White | 0.01 (0.02) | 0.01 (0.61) | 1 | UIAW |
| (unmarked) | Blue | 0.01 (0.02) | 0.01 (0.61) | 1 | UIAB |
| (unmarked) | Black | 0.01 (0.02) | 0.01 (0.61) | 1 | UIAN |
| ON | Green | 0.01 (0.02) | 0.01 (0.61) | 1 | UIA01 |
| OFF | Red | 0.01 (0.02) | 0.01 (0.61) | 1 | UIA02 |
| START | Green | 0.01 (0.02) | 0.01 (0.61) | 1 | UIA03 |
| STOP | Red | 0.01 (0.02) | 0.01 (0.61) | 1 | UIA04 |
| MARCHE | Green | 0.01 (0.02) | 0.01 (0.61) | 1 | UIA05 |
| ARRET | Red | 0.01 (0.02) | 0.01 (0.61) | 1 | UIA06 |
| I | Green | 0.01 (0.02) | 0.01 (0.61) | 1 | UIA07 |
| O | Red | 0.01 (0.02) | 0.01 (0.61) | 1 | UIA08 |

Unicode™ 2 Components | Mushroom Push Buttons

Components for Increased Safety Enclosures

NEC/CEC: Class I, Division 2, Groups A, B, C, D | Class I, Zones 1, AEx de IIC | Class I, Zone1, AEx e IIC | Class II, Division 2, Groups F, G | Class III | Type 4X | IP66
 ATEX/IECEX: Zones 1 and 2 – 21 and 22
 Notable: UKEX, INMETRO Certified

Features

- Can be equipped with up to three Unicode 2 Series Contact Blocks (UCB) contact blocks.
- ATEX, IECEX and cCSAus Certified.
- Available in TS35 rail mounted or panel mounted.

Standard Materials

- Body: polyamide
- Seal: Ethylene-propylene-diene-monomer (M-class) rubber (EPDM)

NEC/CEC Certifications and Compliances

- Certification Type: TCe
 - Operating Temperature: -40 °C to +60 °C (-40 °F to +140 °F)
 - Ingress Protection (solid and liquid): IP66 and Type 4X ①
 - CAN/CSA Standards: C22.2 No. 0-M91, No. 14-05, No. 94-M91, No. 213-M1987, No. 60079-0:07, No. 60079-1:07, No. 60529:05, E60079-7-03, E61241-1-1:02
 - UL Standards: UL 508, UL 50E, UL 60079-0, UL 60079-1, UL 60079-7
 - Other Standards: ANSI/ISA 12.12.01-2011, ANSI/ISA 61241-0 (12.10.02)-2006, ANSI/ISA 61241-1(12.10.03)-2006
 - CSA Listed: 025875

ATEX/IECEX Certifications and Compliances

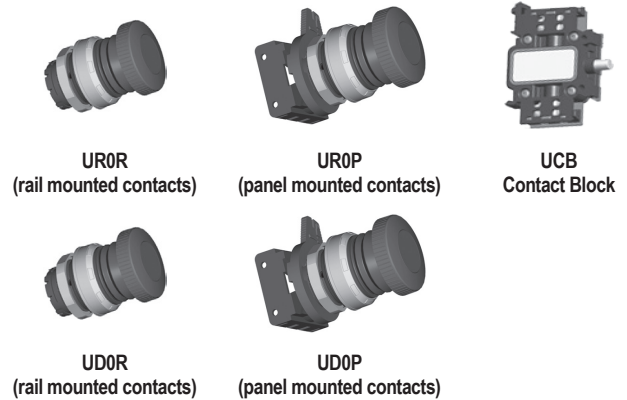
- Certification Type: TCe
 - Gas: Zone 1 and 2
 - Conforming to ATEX 2014/34/EU: Ⓢ II 2 G
 - Type of Protection: Ex eb IIC Gb
 - Dust: Zone 21 and 22
 - Conforming to ATEX 2014/34/EU: Ⓢ II 2 D
 - Type of Protection: Ex tb IIIC Db
- Service Temperature: -40 °C to +60 °C (-40 °F to +140 °F)
- ATEX Certificate: LCIE 09 ATEX 3010U
- IECEX Certificate: IECEX LCI 09.0011U
- Index of Protection according EN/IEC 60529: IP66
- Impact Resistance (shock): IK10

UKEX Certifications

- UKEX Certificate: CML 21UKEX3196U

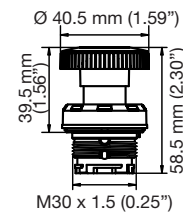
INMETRO Certifications

- INMETRO Certificate: BVC 10.0044-U

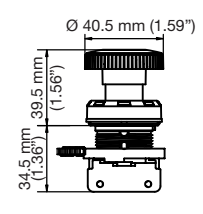


Dimensions in Millimeters (Inches)

Rail Mounted Contacts



Panel Mounted Contacts



Control Stations and Panels

① Overall hazardous location and ingress protection rating depends on the rating of the optional certified components used.

Unicode™ 2 Components | Mushroom Push Buttons

Components for Increased Safety Enclosures

NEC/CEC: Class I, Division 2, Groups A, B, C, D | Class I, Zones 1, AEx de IIC | Class I, Zone1, AEx e IIC | Class II, Division 2, Groups F, G | Class III | Type 4X | IP66
 ATEX/IECEX: Zones 1 and 2 – 21 and 22
 Notable: UKEX, INMETRO Certified

| | Weight kg (lb) | | Volume dm ³ (in ³) | | Pack | Catalog Number | |
|---|----------------|---------------|---|---------------|------|----------------|---------------|
| | Rail Mounted | Panel Mounted | Rail Mounted | Panel Mounted | | Rail Mounted | Panel Mounted |
| Spring Return Mushroom Head Push Button (contact block to be ordered separately) | | | | | | | |
| Legend plates, guards, blanking plugs (see Accessories page). | | | | | | | |
| Red | 0.045 (0.099) | 0.06 (0.13) | 0.26 (15.87) | 0.12 (7.32) | 1 | UR0R | UR0P |
| Black | 0.045 (0.099) | 0.06 (0.13) | 0.26 (15.87) | 0.12 (7.32) | 1 | UB0R | UB0P |
| Push-Pull Mushroom Head Push Button (contact block to be ordered separately) | | | | | | | |
| Legend plates, guards, blanking plugs (see Accessories page). | | | | | | | |
| Red Emergency Stop | 0.045 (0.099) | 0.06 (0.13) | 0.12 (7.32) | 0.26 (15.87) | 1 | UD0R | UD0P |
| 1-Pole Contact Blocks | | | | | | | |
| 1 x NO | 0.032 (0.071) | | 0.06 (3.66) | | 1 | UCB5R | UCB5P |
| 1 x NC | | | | | | UCB9R | UCB9P |
| Accessories | | | | | | | |
| Rail to panel mounted conversion adaptor | 0.02 (0.04) | | 0.08 (4.88) | | 1 | UPMA | |

Control Stations and Panels

Unicode™ 2 Components | Key Release Mushroom Push Buttons

Components for Increased Safety Enclosures

NEC/CEC: Class I, Division 2 Groups A, B, C, D | Class I, Zones 1, Ex e d IIC Gb | Class I, Zones 1, AEx e d IIC Gb | Class II, Division 1, Groups E, F, G | Class II, Zones 21, Ex tb IIIC Db |
 Class II, Zones 21, AEx t IIIC Db | Class III, Division 1 | IP6X
 ATEX/IECEx: Zones 1 and 2 – 21 and 22

Features

- Can be equipped with up to three Unicode 2 Series Contact Blocks (UCB) contact blocks.
- ATEX, IECEx and cCSAus Certified.
- Available in TS35 rail mounted or panel mounted.

Standard Materials

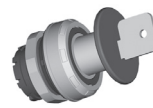
- Body: thermosetting plastic
- Seal: Ethylene-propylene-diene-monomer (M-class) rubber (EPDM)

NEC/CEC Certifications and Compliances

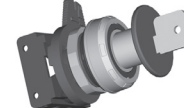
- Certification Type: AUX
 - Rated Ambient Temperature: -55 °C to +70 °C (-67 °F to +158 °F)
 - UL Standards: UL No. 61010-1 (2nd Edition), UL 60079-0 (5th Edition 2009), UL 60079-1 (6th Edition 2009), UL 60079-7 (Ed 4th 2008), UL 60079-31:2009
 - UL Certificate: E184198
 - CAN/CSA Standards: C22.2 No. 0-10, C22.2 No. 61010-1-04, C22.2 No. 213 (2nd Edition), C22.2 No. 60079-0:07, C22.2 No. 60079-1:07, No. 60079-7:03, No. 60079-31:12, E61241-1-1:02, C22.2 No. 60529:05 (R 2010)
 - CSA Certificate: 2661552
 - Other Standards: ANSI/ISA-12.12.01 (2013), ANSI/ISA-61241-0 (12.10.02)-2006 (R2011), ANSI/ISA-61241-1 (12.10.03)-2006 (R2011), ANSI/IEC 60529-2004

ATEX/IECEx Certifications and Compliances

- Certification Type: 05-0003-00
 - Gas: Zone 1 and 2
 - Conforming to ATEX 2014/34/EU: Ⓢ II 2 G
 - Type of Protection: Ex eb IIC Gb
 - Dust: Zone 21 and 22
 - Conforming to ATEX 2014/34/EU: Ⓢ II 2 D
 - Type of Protection: Ex tb IIIC Db
- Service Temperature: -55 °C to +70 °C (-67°F to +158 °F)
- ATEX Certificate: CML 13 ATEX 3010U
- IECEx Certificate: IECEx CML 14.0005U
- Index of Protection according EN/IEC 60529: IP66



UC0R
(rail mounted contacts)



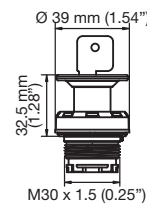
UC0P
(panel mounted contacts)



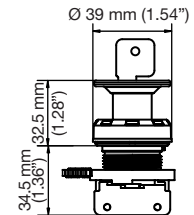
UCB
Contact Block

Dimensions in Millimeters (Inches)

Rail Mounted Contacts



Panel Mounted Contacts



| | Weight kg (lb) | | Volume dm ³ (in ³) | | Pack | Catalog Number | |
|--|----------------|---------------|---|---------------|------|----------------|---------------|
| | Rail Mounted | Panel Mounted | Rail Mounted | Panel Mounted | | Rail Mounted | Panel Mounted |

Key Release Mushroom Head Push Button (contact block to be ordered separately)

For legend plates, guards and blanking plugs see accessories page.

| | | | | | | | |
|--|---------------|---------------|-------------|--------------|---|---------|---------|
| Red | 0.085 (0.183) | 0.096 (0.212) | 0.09 (5.49) | 0.25 (15.26) | 1 | UC0R | UC0P |
| 1-Pole Contact Blocks | | | | | | | |
| 1 x NO | | | | | | UCB5R | UCB5P |
| 1 x NC | 0.032 (0.071) | | 0.06 (3.66) | | 1 | UCB9R | UCB9P |
| Spare Parts | | | | | | | |
| Spare key (type 4A 185) | — | | — | | | SK4A185 | SK4A185 |
| Rail to panel mounted conversion adaptor | 0.02 (0.04) | | 0.08 (4.88) | | 1 | — | UPMA |

Unicode™ 2 Components | Key Momentary Push Buttons

Components for Increased Safety Enclosures

NEC/CEC: Class I, Division 2 Groups A, B, C, D | Class I, Zones 1, Ex e d IIC Gb | Class I, Zones 1, AEx e d IIC Gb | Class II, Division 1, Groups E, F, G | Class II, Zones 21, Ex tb IIIC Db | Class II, Zones 21, AEx t IIIC Db | Class III, Division 1 | IP6X
ATEX/IECEx: Zones 1 and 2 – 21 and 22

Features

- Can be equipped with up to three Unicode 2 Series Contact Blocks (UCB) contact blocks.
- ATEX, IECEx and cCSAus Certified.
- Available in TS35 rail mounted or panel mounted.

Standard Materials

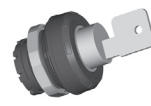
- Body: thermosetting plastic
- Seal: Ethylene-propylene-diene-monomer (M-class) rubber (EPDM)

NEC/CEC Certifications and Compliances

- Certification Type: AUX
 - Rated Ambient Temperature: -55 °C to +70 °C (-67 °F to +158 °F)
 - UL Standards: UL No. 61010-1 (2nd Edition), UL 60079-0 (5th Edition 2009), UL 60079-1 (6th Edition 2009), UL 60079-7 (Ed 4th 2008), UL 60079-31:2009
 - UL Certificate: E184198
 - CAN/CSA Standards: C22.2 No. 0-10, C22.2 No. 61010-1-04, C22.2 No 213 (2nd Edition), C22.2 No. 60079-0:07, C22.2 No. 60079-1:07, No. 60079-7:03, No. 60079-31:12, E61241-1-1:02, C22.2 No. 60529:05 (R 2010)
 - CSA Certificate: 2661552
 - Other Standards: ANSI/ISA-12.12.01 (2013), ANSI/ISA-61241-0 (12.10.02)-2006 (R2011), ANSI/ISA-61241-1 (12.10.03)-2006 (R2011), ANSI/IEC 60529-2004

ATEX/IECEx Certifications and Compliances

- Certification Type: 05-0003-00
 - Gas: Zone 1 and 2
 - Conforming to ATEX 2014/34/EU: Ⓢ II 2 G
 - Type of Protection: Ex eb IIC Gb
 - Dust: Zone 21 and 22
 - Conforming to ATEX 2014/34/EU: Ⓢ II 2 D
 - Type of Protection: Ex tb IIIC Db
- Service Temperature: -55 °C to +70 °C (-67°F to +158 °F)
- ATEX Certificate: CML 13 ATEX 3010U
- IECEx Certificate: IECEx CML 14.0005U
- Index of Protection according EN/IEC 60529: IP66



UE0R
(rail mounted contacts)



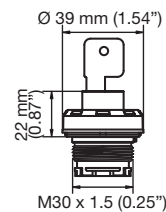
UE0P
(panel mounted contacts)



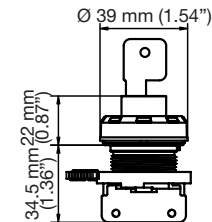
UCB
Contact Block

Dimensions in Millimeters (Inches)

Rail Mounted Contacts



Panel Mounted Contacts



Control Stations and Panels

| | Weight kg (lb) | | Volume dm ³ (in ³) | | Pack | Catalog Number | |
|---|----------------|---------------|---|---------------|------|----------------|---------------|
| | Rail Mounted | Panel Mounted | Rail Mounted | Panel Mounted | | Rail Mounted | Panel Mounted |
| Key Momentary Push Button (contact block to be ordered separately) | | | | | | | |
| For legend plates, guards and blanking plugs see accessories page. | | | | | | | |
| Key removable in both positions | 0.080 (0.176) | 0.093 (0.205) | 0.08 (4.88) | 0.20 (12.20) | 1 | UE0R | UE0P |
| Key removable in ON positions | 0.080 (0.176) | 0.093 (0.205) | 0.08 (4.88) | 0.20 (12.20) | 1 | UF0R | UF0P |
| Key removable in OFF positions | 0.080 (0.176) | 0.093 (0.205) | 0.08 (4.88) | 0.20 (12.20) | 1 | UG0R | UG0P |
| 1-Pole Contact Blocks | | | | | | | |
| 1 x NO | | | | | | UCB5R | UCB5P |
| 1 x NC | 0.032 (0.071) | | 0.06 (3.66) | | 1 | UCB9R | UCB9P |
| Spare Parts | | | | | | | |
| Spare key (type 4A 185) | — | | — | | | SK4A185 | SK4A185 |
| Rail to panel mounted conversion adaptor | 0.02 (0.04) | | 0.08 (4.88) | | 1 | — | UPMA |

Unicode™ 2 Components | Rotary Actuators

Components for Increased Safety Enclosures

NEC/CEC: Class I, Division 2, Groups A, B, C, D | Class I, Zones 1, AEx de IIC | Class I, Zone1, AEx e IIC | Class II, Division 2, Groups F, G | Class III | Type 4X/IP66
 ATEX/IECEx: Zones 1 and 2 – 21 and 22
 Notable: UKEX, INMETRO Certified

Features

- Can be equipped with up to three Unicode 2 Series Contact Blocks (UCB) contact blocks.
- Certified ATEX/IECEx.
- Available in TS35 rail mounted or panel mounted.

Standard Materials

- Body: thermosetting plastic
- Seal: Ethylene-propylene-diene-monomer (M-class) rubber (EPDM)

NEC/CEC Certifications and Compliances

- Certification Type: TCe
 - Operating Temperature: -40 °C to +60 °C (-40 °F to +140 °F)
 - Ingress Protection (solid and liquid): IP66 and Type 4X ①
 - CAN/CSA Standards: C22.2 No. 0-M91, No. 14-05, No. 94-M91, No. 213-M1987, No. 60079-0:07, No. 60079-1:07, No. 60529:05, E60079-7-03, E61241-1-1:02
 - UL Standards: UL 508, UL 50E, UL 60079-0, UL 60079-1, UL 60079-7
 - Other Standards: ANSI/ISA 12.12.01-2011, ANSI/ISA 61241-0 (12.10.02)-2006, ANSI/ISA 61241-1(12.10.03)-2006
 - CSA Listed: 025875

ATEX/IECEx Certifications and Compliances

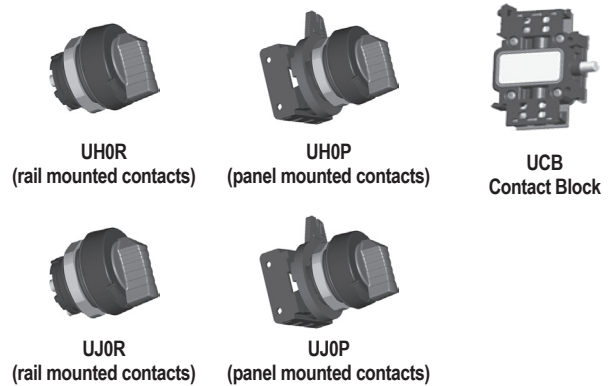
- Certification Type: TCe
 - Gas: Zone 1 and 2
 - Conforming to ATEX 2014/34/EU Ⓢ II 2 G
 - Type of Protection: Ex eb IIC Gb
 - Dust: Zone 21 and 22
 - Conforming to ATEX 2014/34/EU: Ⓢ II 2 D
 - Type of Protection: Ex tb IIIC Db
- Service Temperature: -40 °C to +60 °C (-40 °F to +140 °F)
- ATEX Certificate: LCIE 09 ATEX 3010U
- IECEx Certificate: IECEx LCI 09.0011U
- Index of Protection according EN/IEC 60529: IP66
- Impact Resistance (shock): IK10

UKEX Certifications

- UKEX Certificate: CML 21UKEX3196U

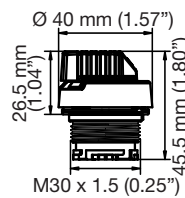
INMETRO Certifications

- INMETRO Certificate: BVC 10.0044-U

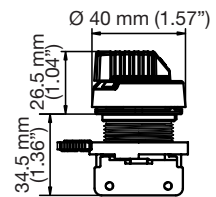


Dimensions in Millimeters (Inches)

Rail Mounted Contacts



Panel Mounted Contacts



① Overall hazardous location and ingress protection rating depends on the rating of the optional certified components used.

Unicode™ 2 Components | Rotary Actuators

Components for Increased Safety Enclosures

NEC/CEC: Class I, Division 2, Groups A, B, C, D | Class I, Zones 1, AEx de IIC | Class I, Zone1, AEx e IIC | Class II, Division 2, Groups F, G | Class III | Type 4X/IP66
 ATEX/IECEX: Zones 1 and 2 – 21 and 22
 Notable: UKEX, INMETRO Certified

| | Weight kg (lb) | | Volume dm ³ (in ³) | | Pack | Catalog Number | |
|--|----------------|---------------|---|---------------|------|----------------|---------------|
| | Rail Mounted | Panel Mounted | Rail Mounted | Panel Mounted | | Rail Mounted | Panel Mounted |
| 2-Position Rotary Actuator (contact block to be ordered separately) | | | | | | | |
| For legend plates, guards and blanking plugs see accessories page. | | | | | | | |
| 2-Positions Selector Switch (O-I), 2 maintained positions | 0.038 (0.084) | 0.051 (0.112) | 0.09 (5.49) | 0.22 (13.43) | 1 | UH0R | UH0P |
| 3-Position Rotary Actuator (contact block to be ordered separately) | | | | | | | |
| Legend plates, guards, blanking plugs (see Accessories page). | | | | | | | |
| 3-Position Selector Switch, I and II position maintained (I-O-II) | 0.038 (0.084) | 0.051 (0.112) | 0.09 (5.49) | 0.22 (13.43) | 1 | UJ0R | UJ0P |
| 3-Position Selector Switch, I and II spring return to O (I->O<-II) | 0.038 (0.084) | 0.051 (0.112) | 0.09 (5.49) | 0.22 (13.43) | 1 | UK0R | UK0P |
| 3-Position Selector Switch, I maintained, II spring return to O (I-O<-II) | 0.038 (0.084) | 0.051 (0.112) | 0.09 (5.49) | 0.22 (13.43) | 1 | UM0R | UM0P |
| 3-Position Selector Switch, I spring return to O, II maintained (I->O-II) | 0.038 (0.084) | 0.051 (0.112) | 0.09 (5.49) | 0.22 (13.43) | 1 | UN0R | UN0P |
| 1-Pole Contact Blocks | | | | | | | |
| 1 x NO | 0.032 (0.071) | | 0.06 (3.66) | | 1 | UCB5R | UCB5P |
| 1 x NC | 0.032 (0.071) | | 0.06 (3.66) | | 1 | UCB9R | UCB9P |
| Spare Parts | | | | | | | |
| Rail to panel mounted conversion adaptor | 0.02 (0.04) | | 0.08 (4.88) | | 1 | — | UPMA |

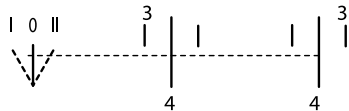
Control Stations and Panels

Wiring Diagrams

UJ0

| UJ0 | 3-4 | 3-4 |
|-----|-----|-----|
| I | X | |
| O | | |
| II | | X |

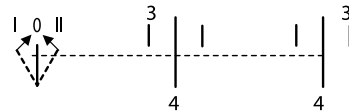
"NO" "NO"



UK0

| UK0 | 3-4 | 3-4 |
|-----|-----|-----|
| I | X | |
| O | | |
| II | | X |

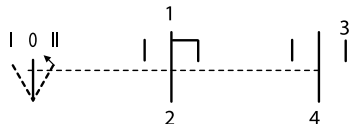
"NO" "NO"



UM0

| UM0 | 1-2 | 3-4 |
|-----|-----|-----|
| I | | |
| O | X | |
| II | X | X |

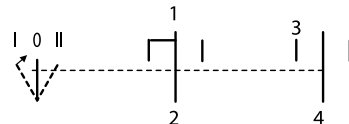
"NC" "NO"



UN0

| UN0 | 1-2 | 3-4 |
|-----|-----|-----|
| I | X | X |
| O | X | |
| II | | |

"NC" "NO"



Unicode™ 2 Components | Illuminated Push Buttons

Components for Increased Safety Enclosures

NEC/CEC: Class I, Division 2, Groups A, B, C, D | Class I, Zones 1, AEx de IIC | Class I, Zone1, AEx e IIC | Class II, Division 2, Groups F, G | Class III | Type 4X | IP66
 ATEX/IECEx: Zones 1 and 2 – 21 and 22
 Notable: UKEX, INMETRO Certified

Features

- Can be equipped with up to two Unicode 2 Series Contact Blocks (UCB) contact blocks.
- ATEX, IECEx and cCSAus Certified.
- Available in TS35 rail mounted or panel mounted.
- High intensity single LED light.
- Rated operating voltage (Ue): 12 Vac to 264 Vac, 50/60 Hz and 12 Vdc to 60 Vdc.
- Terminal connection: 2.5 mm² (0.004 in²)

Standard Materials

- Body: polyamide
- Lens: polycarbonate
- Seal: Ethylene-propylene-diene-monomer (M-class) rubber (EPDM)

NEC/CEC Certifications and Compliances

- Certification Type: TCe
 - Operating Temperature: -40 °C to +60 °C (-40 °F to +140 °F)
 - Ingress Protection (solid and liquid): IP66 and Type 4X ①
 - CAN/CSA Standards: C22.2 No. 0-M91, No. 14-05, No. 94-M91, No. 213-M1987, No. 60079-0:07, No. 60079-1:07, No. 60529:05, E60079-7-03, E61241-1-1:02
 - UL Standards: UL 508, UL 50E, UL 60079-0, UL 60079-1, UL 60079-7
 - Other Standards: ANSI/ISA 12.12.01-2011, ANSI/ISA 61241-0 (12.10.02)-2006, ANSI/ISA 61241-1(12.10.03)-2006
 - CSA Listed: 025875

ATEX/IECEx Certifications and Compliances

- Certification Type: TCe (Actuator and Lens)
 - Gas: Zone 1 and 2
 - Conforming to ATEX 2014/34/EU: Ⓢ II 2 G
 - Type of Protection: Ex eb IIC Gb
 - Dust: Zone 21 and 22
 - Conforming to ATEX 2014/34/EU: Ⓢ II 2 D
 - Type of Protection: Ex tb IIIC Db
 - Service Temperature: -40 °C to +60 °C (-40 °F to +140 °F)
 - ATEX Certificate: LCIE 09 ATEX 3010U
 - IECEx Certificate: IECEx LCI 09.0011U
 - Index of Protection according EN/IEC 60529: IP66
 - Impact Resistance (shock): IK10
- Certification Type: UCVe (Contact Block and Pilot Light)
 - Gas: Zone 1 and 2
 - Conforming to ATEX 2014/34/EU: Ⓢ II 2 G
 - Type of Protection: Ex db eb IIC Gb
 - Service Temperature: -55 °C to +90 °C (-67 °F to +194 °F)
 - ATEX Certificate: INERIS 20 ATEX 9002U
 - IECEx Certificate: IECEx INE 20.0013U

UKEX Certifications

- Certification Type: TCe (Actuator and Lens)
 - UKEX Certificate: : CML21UKEX3196U
- Certification Type: UCVe (Contact Block and Pilot Light)
 - UKEX Certificate: CML21UKEX1149U

INMETRO Certifications

- Certification Type: TCe (Actuator and Lens)
 - INMETRO Certificate: BVC 10.0044-U
- Certification Type: UCVe (Contact Block and Pilot Light)
 - INMETRO Certificate: BVC 20.3855-U



ULG0R
(rail mounted contacts)



ULG0P
(panel mounted contacts)



UCB
Contact Block



UIL08

① Overall hazardous location and ingress protection rating depends on the rating of the optional certified components used.

Unicode™ 2 Components | Illuminated Push Buttons

Components for Increased Safety Enclosures

NEC/CEC: Class I, Division 2, Groups A, B, C, D | Class I, Zones 1, AEx de IIC | Class I, Zone1, AEx e IIC | Class II, Division 2, Groups F, G | Class III | Type 4X | IP66
ATEX/IECEx: Zones 1 and 2 – 21 and 22
Notable: UKEX, INMETRO Certified

| | Weight kg (lb) | | Volume dm ³ (in ³) | | Pack | Catalog Number | |
|--|----------------|---------------|---|---------------|------|----------------|---------------|
| | Rail Mounted | Panel Mounted | Rail Mounted | Panel Mounted | | Rail Mounted | Panel Mounted |
| Spring Return Illuminated Push Button (contact block to be ordered separately) For legend plates, guards and blanking plugs see accessories page. | | | | | | | |
| Green | 0.062 (0.137) | 0.075 (0.165) | 0.26 (15.87) | 0.28 (17.09) | 1 | ULG0R | ULG0P |
| Red | 0.062 (0.137) | 0.075 (0.165) | 0.26 (15.87) | 0.28 (17.09) | 1 | ULR0R | ULR0P |
| White | 0.062 (0.137) | 0.075 (0.165) | 0.26 (15.87) | 0.28 (17.09) | 1 | ULW0R | ULW0P |
| Blue | 0.062 (0.137) | 0.075 (0.165) | 0.26 (15.87) | 0.28 (17.09) | 1 | ULB0R | ULB0P |
| Yellow | 0.062 (0.137) | 0.075 (0.165) | 0.26 (15.87) | 0.28 (17.09) | 1 | ULY0R | ULY0P |

1-Pole Contact Blocks

| | | | | | | | |
|--------|---------------|--|-------------|--|---|-------|-------|
| 1 x NO | 0.032 (0.071) | | 0.06 (3.66) | | 1 | UCB5R | UCB5P |
| 1 x NC | 0.032 (0.071) | | 0.06 (3.66) | | 1 | UCB9R | UCB9P |

Spare Parts

| | | | | | | | |
|--|-------------|--|-------------|--|---|---|------|
| Rail to panel mounted conversion adaptor | 0.02 (0.04) | | 0.08 (4.88) | | 1 | — | UPMA |
|--|-------------|--|-------------|--|---|---|------|

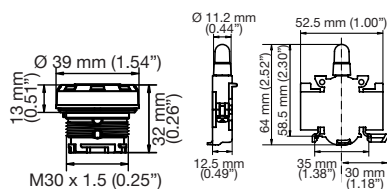
| Marking | Color | Weight kg (lb) | Volume dm ³ (in ³) | Pack | Catalog Number |
|---------|-------|----------------|---|------|----------------|
|---------|-------|----------------|---|------|----------------|

Set of Five Spare Inserts

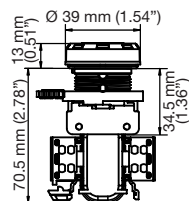
| | | | | | |
|------------|--------|-------------|-------------|---|-------|
| (unmarked) | Green | 0.01 (0.02) | 0.01 (0.61) | 1 | UIAG |
| (unmarked) | Red | 0.01 (0.02) | 0.01 (0.61) | 1 | UIAR |
| (unmarked) | Yellow | 0.01 (0.02) | 0.01 (0.61) | 1 | UIAY |
| (unmarked) | White | 0.01 (0.02) | 0.01 (0.61) | 1 | UIAW |
| (unmarked) | Blue | 0.01 (0.02) | 0.01 (0.61) | 1 | UIAB |
| (unmarked) | Black | 0.01 (0.02) | 0.01 (0.61) | 1 | UIAN |
| ON | Green | 0.01 (0.02) | 0.01 (0.61) | 1 | UIA01 |
| OFF | Red | 0.01 (0.02) | 0.01 (0.61) | 1 | UIA02 |
| START | Green | 0.01 (0.02) | 0.01 (0.61) | 1 | UIA03 |
| STOP | Red | 0.01 (0.02) | 0.01 (0.61) | 1 | UIA04 |
| MARCHE | Green | 0.01 (0.02) | 0.01 (0.61) | 1 | UIA05 |
| ARRET | Red | 0.01 (0.02) | 0.01 (0.61) | 1 | UIA06 |
| I | Green | 0.01 (0.02) | 0.01 (0.61) | 1 | UIA07 |
| O | Red | 0.01 (0.02) | 0.01 (0.61) | 1 | UIA08 |

Dimensions in Millimeters (Inches)

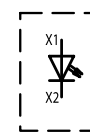
Rail Mounted Contacts



Panel Mounted Contacts



Wiring Diagram



Unicode™ 2 Components | Pilot Lights

Components for Increased Safety Enclosures

NEC/CEC: Class I, Division 2, Groups A, B, C, D | Class I, Zones 1, AEx de IIC | Class I, Zone1, AEx e IIC | Class II, Division 2, Groups F, G | Class III | Type 4X | IP66
ATEX/IECEx: Zones 1 and 2 – 21 and 22
Notable: UKEX, INMETRO Certified

Features

- ATEX, IECEx and cCSAus Certified.
- Available in TS35 rail mounted or panel mounted.
- High intensity single LED light.
- Rated operating voltage (Ue): 12 Vac to 264 Vac, 50/60 Hz and 12 Vdc to 60 Vdc.
- Terminal connection: 2.5 mm² (0.004 in²)

Standard Materials

- Body: polyamide
- Lens: polycarbonate
- Seal: Ethylene-propylene-diene-monomer (M-class) rubber (EPDM)

NEC/CEC Certifications and Compliances

- Actuator and Lens: Certification Type: TCe
 - Operating Temperature: -40 °C to +60 °C (-40 °F to +140 °F)
 - Ingress Protection (solid and liquid): IP66 and Type 4X ①
 - CAN/CSA Standards: C22.2 No. 0-M91, No. 14-05, No. 94-M91, No. 213-M1987, No. 60079-0:07, No. 60079-1:07, No. 60529:05, E60079-7-03, E61241-1-1:02
 - UL Standards: UL 508, UL 50E, UL 60079-0, UL 60079-1, UL 60079-7
 - Other Standards: ANSI/ISA 12.12.01-2011, ANSI/ISA 61241-0 (12.10.02)-2006, ANSI/ISA 61241-1(12.10.03)-2006
 - CSA Listed: 025875

ATEX/IECEx Certifications and Compliances

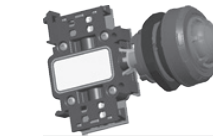
- Certification Type: TCe (Actuator and Lens)
 - Gas: Zone 1 and 2
 - Conforming to ATEX 2014/34/EU: Ⓢ II 2 G
 - Type of Protection: Ex eb IIC Gb
 - Dust: Zone 21 and 22
 - Conforming to ATEX 2014/34/EU: Ⓢ II 2 D
 - Type of Protection: Ex tb IIIC Db
 - Service Temperature: -40 °C to +60 °C (-40 °F to +140 °F)
 - ATEX Certificate: LCIE 09 ATEX 3010U
 - IECEx Certificate: IECEx LCI 09.0011U
 - Index of Protection according EN/IEC 60529: IP66
 - Impact Resistance (shock): IK10
- Certification Type: UCVe (Contact Block and Pilot Light)
 - Gas: Zone 1 and 2
 - Conforming to ATEX 2014/34/EU: Ⓢ II 2 G
 - Type of Protection: Ex db eb IIC Gb
 - Service Temperature: -55 °C to +90 °C (-67 °F to +194 °F)
 - ATEX Certificate: INERIS 20 ATEX 9002U
 - IECEx Certificate: IECEx INE 20.0013U

UKEX Certifications

- Certification Type: TCe (Actuator and Lens)
 - UKEX Certificate : CML 21UKEX3196U
- Certification Type: UCVe (Contact Block and Pilot Light)
 - UKEX Certificate : CML 21UKEX1149U

INMETRO Certifications

- Certification Type: TCe (Actuator and Lens)
 - INMETRO Certificate: BVC 10.0044-U
- Certification Type: UCVe (Contact Block and Pilot Light)
 - INMETRO Certificate: BVC20.3855-U



UPG0R (rail mounted contacts)



UPG0P (panel mounted contacts)

① Overall hazardous location and ingress protection rating depends on the rating of the optional certified components used.

Unicode™ 2 Components | Pilot Lights

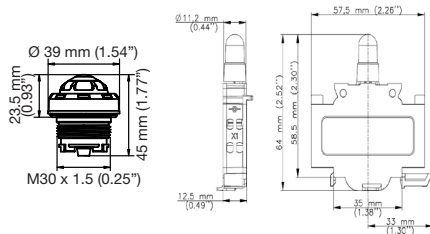
Components for Increased Safety Enclosures

NEC/CEC: Class I, Division 2, Groups A, B, C, D | Class I, Zones 1, AEx de IIC | Class I, Zone1, AEx e IIC | Class II, Division 2, Groups F, G | Class III | Type 4X | IP66
 ATEX/IECEX: Zones 1 and 2 – 21 and 22
 Notable: UKEX, INMETRO Certified

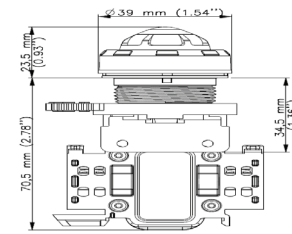
| | Weight kg (lb) | | Volume dm ³ (in ³) | | Pack | Catalog Number | |
|---|----------------|---------------|---|---------------|------|----------------|---------------|
| | Rail Mounted | Panel Mounted | Rail Mounted | Panel Mounted | | Rail Mounted | Panel Mounted |
| Pilot Light: 12 Vac to 254, Vac 50/60 Hz, 12 Vdc to 60 Vdc. For legend plates, guards and blanking plugs see accessories page. | | | | | | | |
| Green | 0.056 (0.123) | 0.069 (0.152) | 0.29 (17.70) | 0.31 (18.92) | 1 | UPG0R | UPG0P |
| Red | 0.056 (0.123) | 0.069 (0.152) | 0.29 (17.70) | 0.31 (18.92) | 1 | UPR0R | UPR0P |
| White | 0.056 (0.123) | 0.069 (0.152) | 0.29 (17.70) | 0.31 (18.92) | 1 | UPW0R | UPW0P |
| Blue | 0.056 (0.123) | 0.069 (0.152) | 0.29 (17.70) | 0.31 (18.92) | 1 | UPB0R | UPB0P |
| Yellow | 0.056 (0.123) | 0.069 (0.152) | 0.29 (17.70) | 0.31 (18.92) | 1 | UPY0R | UPY0P |
| Spare Parts | | | | | | | |
| Rail to panel mounted conversion adaptor | 0.02 (0.04) | | 0.08 (4.88) | | 1 | — | UPMA |
| Spare Lenses | | | | | | | |
| Green | 0.03 (0.06) | | 0.06 (3.66) | | 1 | UPGL | UPGL |
| Red | 0.03 (0.06) | | 0.06 (3.66) | | 1 | UPRL | UPRL |
| White | 0.03 (0.06) | | 0.06 (3.66) | | 1 | UPWL | UPWL |
| Blue | 0.03 (0.06) | | 0.06 (3.66) | | 1 | UPBL | UPBL |
| Yellow | 0.03 (0.06) | | 0.06 (3.66) | | 1 | UPYL | UPYL |

Dimensions in Millimeters (Inches)

Rail Mounted Contacts



Panel Mounted Contacts



Wiring Diagram

