

# ATX™ SWD Series 16 and 32 Amp Switches

## Flameproof

ATEX: Zones 1 and 2 – 21 and 22

### Applications

- Designed to prevent operation in explosive atmospheres during connect and disconnect operation of lighting and light power loads.
- For use in hazardous areas where ignitable vapors, gases or highly combustible dusts are present.
- For installation in chemical and petrochemical plants, refineries and other process industries.

### Features

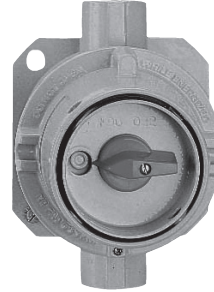
- Available up to 690 Volts, and up to 32 Amps.
- Two threaded entries (one top and one bottom) M20 or M25.
- Switch mechanism fixed at the bottom of the box.
- Padlockable handle.
- Termination:
  - 16 Amp 4 mm<sup>2</sup> terminals
  - 32 Amp 6 mm<sup>2</sup> terminals
- Internal earth:
  - 2 x 4 mm<sup>2</sup> terminals
- External earth:
  - M5 for 16 Amps
  - M6 for 32 Amps

### Standard Materials

- Gray painted marine grade aluminum alloy box
- A4 stainless steel captive screws

### ATEX Certifications and Compliances

- 16 Amp Version. Certification Type: BR1d (16A)
  - Gas: Zone 1 and 2
    - Conforming to ATEX 2014/34/EU: Ⓢ II 2 G
    - Type of Protection: Ex d IIC
    - Temperature class: T6 for Ta = +40 °C, T5 for Ta = +55 °C
  - Dust: Zone 21 and 22
    - Conforming to ATEX 2014/34/EU: Ⓢ II2 D
    - Type of Protection: Ex tD A21
    - Surface Temperature: T95 °C
  - Ambient Temperature: -40 °C to +55 °C
  - ATEX Certificate: LCIE 02 ATEX 6056
  - Index of Protection according EN/IEC 60529: IP66
  - Impact Resistance (shock): IK10
- 32 Amp Version. Certification Type: CF1E (32A)
  - Gas: Zone 1 and 2
    - Conforming to ATEX 2014/34/EU: Ⓢ II 2 G
    - Type of Protection: Ex d IIC
    - Temperature class: T6 for Ta ≤ +40 °C, T5 for +40 °C < Ta ≤ +55 °C
  - Dust: Zone 21 and 22
    - Conforming to ATEX 2014/34/EU: Ⓢ II2 D
    - Type of Protection: Ex tD A21
    - Surface Temperature: T95 °C
  - Ambient Temperature: -40 °C to +55 °C
  - ATEX Certificate: LCIE 03 ATEX 6044X
  - Index of Protection according EN/IEC 60529: IP66
  - Impact Resistance (shock): IK10



16 Amp Version



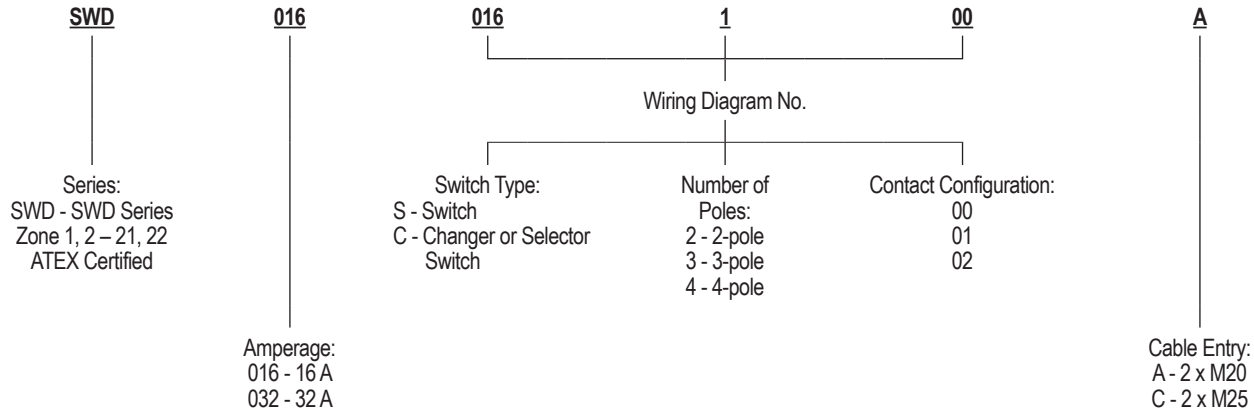
32 Amp Version

# ATX™ SWD Series 16 and 32 Amp Switches

## Flameproof

ATEX: Zones 1 and 2 – 21 and 22

### Catalog Numbering Guide



Switch Type	Wiring Diagram No.	Entries	Weight kg (lb)	Volume dm <sup>3</sup> (in <sup>3</sup> )	Catalog Number
<b>16 Amp Switch</b>					
1-pole changeover	C100	2 x M20	1.1 (2.43)	3.8 (231.89)	<b>SWD016C100A</b>
		2 x M25			<b>SWD016C100C</b>
2-pole switch	S200	2 x M20	1.1 (2.43)	3.8 (231.89)	<b>SWD016S200A</b>
		2 x M25			<b>SWD016S200C</b>
3-pole switch	S300	2 x M20	1.1 (2.43)	3.8 (231.89)	<b>SWD016S300A</b>
		2 x M25			<b>SWD016S300C</b>
4-pole switch	S400	2 x M20	1.1 (2.43)	3.8 (231.89)	<b>SWD016S400A</b>
		2 x M25			<b>SWD016S400C</b>
<b>32 Amp Switch</b>					
2-pole switch	S200	2 x M20	2.7 (5.95)	8.0 (488.19)	<b>SWD032S200A</b>
		2 x M25			<b>SWD032S200C</b>
3-pole switch	S300	2 x M20	2.7 (5.95)	8.0 (488.19)	<b>SWD032S300A</b>
		2 x M25			<b>SWD032S300C</b>
4-pole switch	S400	2 x M20	2.7 (5.95)	8.0 (488.19)	<b>SWD032S400A</b>
		2 x M25			<b>SWD032S400C</b>

### Switching Arrangement — X Denotes "Closed Contact"

C100			C200			S300				S400				
Positions	Contacts		Positions	Contacts		Positions	Contacts			Positions	Contacts			
	1-2	3-4		1-2	3-4		1-2	3-4	5-6		1-2	3-4	5-6	7-8
0	X		0			0				0				
1		X	1	X	X	1	X	X	X	1	X	X	X	X

# ATX™ SWD Series 16 and 32 Amp Switches

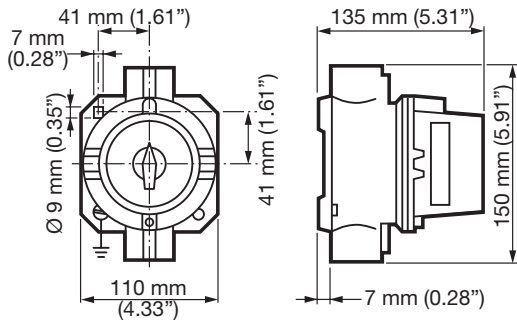
## Flameproof

ATEX: Zones 1 and 2 – 21 and 22

Main Contacts		16 Amps	32 Amps
Rated insulation voltage (Ui)		690 V	690 V
Thermal rating		20 A	40 A
AC 21 A		16 A	32 A
AC 15		6 A	12 A
AC 23 A	3 x 230 V	4 KW	11 KW
	3 x 400 V	7.5 KW	11 KW
	3 x 500 V	5.5 KW	11 KW
	3 x 690 V	4 KW	11 KW
AC 3 A	3 x 230 V	3 KW	5.5 KW
	3 x 400 V	4 KW	11 KW
	3 x 500 V	5.5 KW	11 KW
	3 x 690 V	3 KW	11 KW
Flexible Termination		2.5 mm <sup>2</sup> (0.004 in <sup>2</sup> )	6 mm <sup>2</sup> (0.009 in <sup>2</sup> )
Solid Termination		4 mm <sup>2</sup> (0.006 in <sup>2</sup> )	6 mm <sup>2</sup> (0.009 in <sup>2</sup> )

### Dimensions in Millimeters (Inches)

#### 16 Amp Version



#### 32 Amp Version

