

ATX™ D Series Aluminum Control Stations

Flameproof

ATEX: Zones 1 and 2 – 21 and 22

Applications

- Local control stations for use in hazardous areas.
- Control of electrical equipment at power plants, chemical and petrochemical plants, petroleum refineries, pulp and paper processing plants and various industrial applications.

Features

- 1 and 2 Function Ex d IIC:
 - Supplied with actuators, contact blocks and pilot lights.
 - TS35 rail mounted contact blocks.
 - Threaded flameproof joint.
 - Connection: 2 x 2.5 mm² (0.004 in²) maximum.
 - Internal earth: 2 x 4 mm² (0.006 in²).
 - External ground: M5
 - 1 x M20 or M25 threaded entry at bottom.
 - Cable glands and plugs to be ordered separately.
- 2 and 3 Function Ex d IIB:
 - Supplied with actuators and rail mounting pilot lights and contact blocks.
 - Flanged flameproof joint.
 - Yellow laminated plastic legend plate with black lettering.
 - Connection : 2 x 2.5 mm² (0.004 in²) maximum.
 - Internal earth: 2 x 4 mm² (0.006 in²).
 - External earth: M6 screw.
 - 2 x M20 threaded entries at the bottom.
 - Cable glands and plugs to be ordered separately.



1 Function



2 Function



2 Function



3 Function

Standard Materials

- Box: gray painted marine grade aluminum alloy

Options

- For other configurations, see pre-drilled control stations or consult factory.






ATEX Certifications and Compliances

- Certification Type: BR1d
 - Gas, Zones 1 and 2
 - Conforming to ATEX 2014/34/EU: Ⓢ II 2 G
 - Type of Protection: Ex d IIC
 - Temperature Class: T6 for Ta = +40 °C (+104 °F), T5 for Ta = +55 °C (+131 °F)
 - Dust, Zones 21 and 22
 - Conforming to ATEX 2014/34/EU: Ⓢ II2 D
 - Type of Protection: Ex tD A21
 - Surface Temperature: T95 °C (T203 °F)
 - Ambient Temperature: -40 °C to +55 °C (-40 °F to +131 °F)
 - ATEX Certificate: LCIE 02 ATEX 6056
- Certification Type: CF2D
 - Gas, Zones 1 and 2
 - Conforming to ATEX 2014/34/EU: Ⓢ II 2 G
 - Type of Protection: Ex d IIB
 - Temperature Class: T6 for Ta ≤ +40 °C (+104 °F), T5 for +40 °C (+104 °F) < Ta ≤ +55 °C (+131 °F)
 - Dust, Zones 21 and 22
 - Conforming to ATEX 2014/34/EU: Ⓢ II2 D
 - Type of Protection: Ex tD A21
 - Surface Temperature: T95 °C (T203 °F)
 - Ambient Temperature: -40 °C to +55 °C (-40 °F to +131 °F)
 - ATEX Certificate: LCIE 03 ATEX 6061X
 - Index of Protection according EN/IEC 60529: IP66
 - Impact Resistance (shock): IK10

ATX™ D Series Aluminum Control Stations

Flameproof

ATEX: Zones 1 and 2 – 21 and 22

Type	Description/Function	Bottom Entries	Weight kg (lb)	Volume dm ³ (in ³)	Catalog Number	
1 Function Ex d IIC Control Stations						
Spring Return Push Button						
	BR1d	1x black spring return push button with 1NO + 1NC momentary contacts	1 x M20	1.0 (2.20)	3.75 (24.41)	DA1W1T101
	BR1d	1x black spring return push button with 1NO + 1NC momentary contacts	1 x M25	1.0 (2.20)	3.75 (24.41)	DA1W3T101
Mushroom Head Push Button						
	BR1d	1x red mushroom head push-pull with 1NO + 1NC maintained contacts Padlockable in both positions	1 x M20	1.2 (2.65)	3.75 (24.41)	DA1W1T102
	BR1d	1x red mushroom head push-pull with 1NO + 1NC maintained contacts Padlockable in both positions	1 x M25	1.2 (2.65)	3.75 (24.41)	DA1W3T102
	BR1d	Red mushroom head key release with 1NO + 1NC maintained contact Unlocked with key (MS1)	1 x M20	1.2 (2.65)	3.75 (24.41)	DA1W1T104
	BR1d	Red mushroom head key release with 1NO + 1NC maintained contact Unlocked with key (MS1)	1 x M25	1.2 (2.65)	3.75 (24.41)	DA1W3T104
Time Delayed Push Button 230 V 50/60 Hz						
	BR1d	1x time delayed black impulse push button adjustable from 25s to 15mn For 1000 W incandescent or 400 W fluorescent max.	1 x M20	1.2 (2.65)	3.75 (24.41)	DA1W1T103
	BR1d	1x time delayed black impulse push button adjustable from 25 s to 15 mn For 1000 W incandescent or 400 W fluorescent max.	1 x M25	1.2 (2.65)	3.75 (24.41)	DA1W3T103
Twin Push Buttons						
	BR1d	1x green spring return 'I' push button with 1NO momentary contact 1x red spring return 'O' push button with 1NC momentary contact	1 x M20	1.2 (2.65)	3.75 (24.41)	DA1W1T201
	BR1d	1x green spring return 'I' push button with 1NO momentary contact 1x red spring return 'O' push button with 1NC momentary contact	1 x M25	1.2 (2.65)	3.75 (24.41)	DA1W3T201
2 Function Ex d IIB Control Stations						
Twin Push Buttons						
	CF2D	1x green spring return 'I' push button with 1NO momentary contact 1x red spring return 'O' push button with 1NC momentary contact	2 x M20	2.5 (5.51)	7.00 (427.17)	DA2W2T201
	CF2D	1x green spring return 'I' push button with 1NO momentary contact 1x red mushroom head push-pull with 1NO+1NC maintained contacts	2 x M20	2.5 (5.51)	7.00 (427.17)	DA2W2T202

Control Stations and Panels

ATX™ D Series Aluminum Control Stations

Flameproof

ATEX: Zones 1 and 2 – 21 and 22

Type	Description/Function	Bottom Entries	Weight kg (lb)	Volume dm ³ (in ³)	Catalog Number
------	----------------------	----------------	----------------	---	----------------

3 Function Ex d IIB Control Stations

Pilot Light and Twin Push Buttons



CF2D	1x red/green LED light 85 to 264 Vac 1x green spring return 'I' push button with 1NO momentary contact 1x red spring return 'O' push button with 1NC momentary contact	2 x M20	3.3 (7.28)	9.00 (549.21)	DA5W2T301
------	--	---------	---------------	------------------	-----------

Ammeter and Twin Push Buttons

CF2D	1x ammeter 48 x 48 CT1A 3 x FLC 0-1-3A 1x green spring return 'I' push button with 1NO momentary contact 1x red spring return 'O' push button with 1NC momentary contact	2 x M20	3.3 (7.28)	9.00 (549.21)	DA5W2T302
------	--	---------	---------------	------------------	-----------

Ex d IIC Limit Switch

Limit Switch

Stainless steel roller control perpendicular for surface fixing. 1/4 turn fixing (may be modified by end user).



BR1d	1x roller plunger - travel 7 mm max. - Force 22 newtons with 1NO+1NC momentary contacts	1 x M20	1.0 (2.20)	4.60 (280.71)	DA1W1L001
BR1d	1x roller plunger - travel 7 mm max. - Force 22 newtons with 1NO+1NC momentary contacts	1 x M25	1.0 (2.20)	4.60 (280.71)	DA1W3L001

Technical Data

		Contact Block	Light Switch
Insulation Voltage (Ui)		500 V	500 V
Switching Capacity	AC 15	4 A/115 V, 4 A/230 V, 2 A/500 V	450 W/48 V, 900 W/110 V, 1900 W/230 V
	DC 13	3 A/24 V, 1.7 A/42 V, 1.2 A/60 V, 0.8 A/110 V, 0.3 A/220 V	100 W/48 V, 100 W/110 V, 95 W/230 V
Terminal connections		0.75 to 2.5 mm ² (0.001 to 0.004 in ²)	0.75 to 2.5 mm ² (0.001 to 0.004 in ²)
Operation life		>5,000,000 Operations	> 1,000,000 Operations
		LED Pilot Light	
Rated Voltage		85 Vac to 264 Vac, 50/60 Hz	
Rating		5-15 mA	
Max. Power		0.33 W	
Operation life		Average 100,000 Hours at +25 °C (+77 °F)	

ATX™ D Series Aluminum Control Stations

Flameproof

ATEX: Zones 1 and 2 – 21 and 22

Electrical Diagrams

NO Contact Block



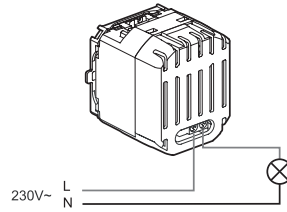
NC Contact Block



LED Pilot Light

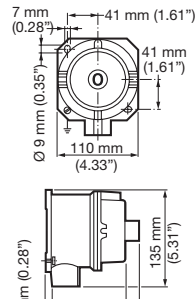


Time Delayed Push Button

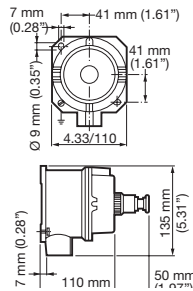


Dimensions in Millimeters (Inches)

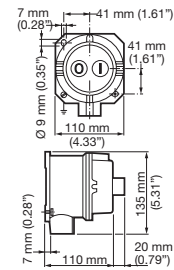
1 Function



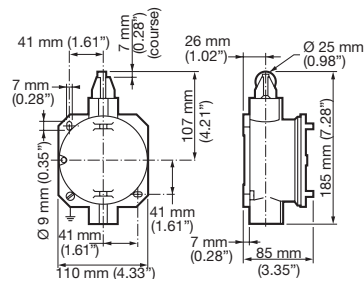
1 Function Emergency Stop



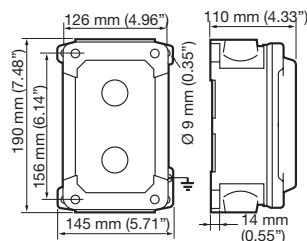
2 Functions



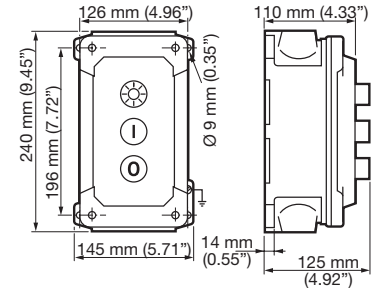
Limit Switch



2 Functions



3 Functions



Control Stations and Panels