

# APDAC/APDSC Series Control Stations

## Flameproof

ATEX/IECEX: Zones 1 and 2 – 21 and 22

### Applications

- Small terminal junction boxes designed to facilitate electrical connections in hazardous areas.
- Designed for use in Zone 1 or 2 areas, where flammable gases or vapors are present either continuously or intermittently.
- Ideal for use in wet or corrosive atmospheres, such as:
  - Petroleum refineries
  - Chemical refineries
  - Other industrial process facilities
- Designed for use in Zone 21 or 22 areas, where flammable dusts are present either continuously or intermittently, such as:
  - Food processing
  - Dairy
  - Brewing
  - Silos
  - Other facilities

### Features

- High impact resistant box.
- Pillar/screw type terminal block up to 16 mm<sup>2</sup> (0,024 po<sup>2</sup>) is available in standard sizes.
- Internal earth: one of the mounting hole for terminals so provided with M5 Screws.
- External earth: M5 screw.
- Back plate supplied as option.
- Operating temperature -20 °C +55 °C (-4 °F to +131 °F).
- Empty enclosures with 'U' certification marking for re-certification is available.
- Electrical data:
  - Maximum voltage: AC, 690 Vac/440 Vdc
  - Current rating: 50 Amp. Vac/Vdc

### Standard Material

- Housing: aluminum; 304/316L stainless steel available on request
- Hardware: stainless steel

### Standard Finishes

- Housing: marine grade gray epoxy powder coat.



APD\_C13P

### ATEX/IECEX Certifications and Compliances

- Certification Type: APDAC/APDSC
  - 16, 25 and 32 Amp Switches
  - Gas, Zones 1 and 2:
    - Conforming to Directive ATEX 94/9/CE: Ⓜ II 2 G
    - Type of Protection: Ex db IIC T\* Gb
    - Temperature Class:
      - T6: 10 Watt Maximum Power Dissipation
      - T5: 20 Watt Maximum Power Dissipation
  - Dust, Zones 21 and 22:
    - Conforming to Directive ATEX 94/9/CE: Ⓜ II 2 D
    - Type of Protection: Ex tb IIIC T\* Db
    - Surface Temperature: T75 °C to T90 °C (T167 °F to T194 °F)
      - T75 °C: 10 Watt Maximum Power Dissipation
      - T90 °C: 20 Watt Maximum Power Dissipation
    - Ambient Temperature: -20 °C ≤ to ≤ +55 °C (-4 °F ≤ to ≤ +131 °F)
  - ATEX Certificate: ExVeritas 19ATEX 0523X; ExVeritas 19ATEX 0524U
  - IECEx Certificate: IECEx EXV: 19.0047X; IECEx EXV 119.0048U
  - Index of Protection according EN/IEC 60529: IP66
  - Internal Volume: ≤ 2 dm<sup>3</sup> (122 in<sup>3</sup>) — 2 liters

### Catalog Numbering Guide — APD Series 130 mm (5.12 in) Diameter Control Station

<p><b>APD</b></p> <p>Series:</p> <p>APD: ATEX/IECEX Certified Enclosure</p>	<p><b>A</b></p> <p>Material :</p> <p>A - Aluminium S - Stainless Steel</p>	<p><b>C</b></p> <p>Gas Group:</p> <p>C - IIC</p>	<p><b>13</b></p> <p>Size mm (in):</p> <p>13P - 130 (5.12)</p>	<p><b>13</b></p> <p>Component: ①</p> <p>IR2 - Indicating Lamp-Red MR - Mushroom Head Push Button 2P - 2 Position Selector P162 - 16 Amp, 2-Pole Switch C - Special/Custom Version</p>	<p><b>A1</b></p> <p>Top/Bottom Entry</p> <p>Side: Code:</p> <p>A - Bottom 1 - 2 x M20 C - Top 2 - 2 x M25 3 - 2 x 1/2" 4 - 2 x 3/4" 5 - 1 x 1" NPT 6 - 1 x M32 7 - Custom Entry</p>	<p><b>B1</b></p> <p>Left/Right Side Entry</p> <p>Side: Code:</p> <p>B - Left 1 - 2 x M20 D - Right 2 - 2 x M25 3 - 2 x 1/2" 4 - 2 x 3/4"</p>	<p>Terminal:</p> <p># - Customized version For Maximum terminals refer to allowed Manufacturer Drawing</p>
---	--	--	---	---	---	--	--

① See full component list for all available options.

# APDAC/APDSC Series Control Stations

## Flameproof

ATEX/IECEx: Zones 1 and 2 – 21 and 22

Equipment	Catalog Number ①
<b>Control Station with Pilot Light</b>	
Enclosure with Red Pilot Light and Entry at Bottom	APDAC 13P IR2 A1 #
Enclosure with 16A - 2 Pole Switch with 2 X M20 Entry at Bottom	APDAC 13P P162 A1 #
Enclosure with 32A - 3 Pole Switch with 2 X M25 Entry at Bottom	APDAC 13P P323 A2 #
<b>Customized Enclosures</b>	
Entry on any side	APDAC 13 #

### Components

Description	Suffix
<b>Spring Return Push Button</b>	
Green spring return 'I' push button with 1NO momentary contact	PG
Red spring return 'O' push button with 1NC momentary contact	PR
<b>Rotary Actuator</b>	
2 maintained positions with 1NO maintained contact	2P
2 maintained positions key operated with 1NO maintained contact key removable in both positions (MS1)	2PM
<b>Mushroom Head Push Button</b>	
Red mushroom head spring return with 1NC momentary contact - Padlockable in both positions	MR
Red mushroom head push pull with 1NC maintained contact- Padlockable in both positions	MRP
Red mushroom head key release with 1NC maintained contact - Unlocked with key (MS1)	MRK

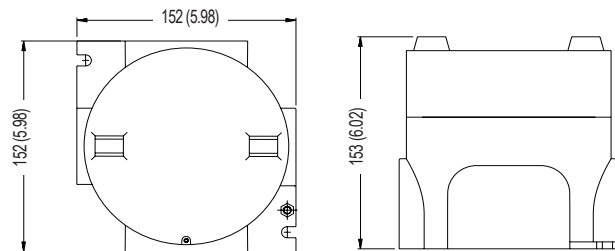
### LED Pilot Lights

Voltage	Color	Suffix
12 to 30 Vac/Vdc	Red	IR0
	Green	IG0
	White	IW0
	Blue	IB0
	Yellow	IY0
48 to 60 Vac/Vdc	Red	IR1
	Green	IG1
	White	IW1
	Blue	IB1
	Yellow	IY1

Control Stations and Panels

### Dimensions in Millimeters (Inches)

#### APADAC 130 mm (5.12") P



Type	Internal Dimensions			External Dimensions		Weight kg (lb)	
	Dia Ø	Height	Length	Width	Height	Aluminum	Stainless Steel
APADAC130P	130 (5.12)	121 (4.76)	152 (5.98)	152 (5.98)	153 (6.02)	2.00 (4.41)	5.92 (13.05)

① Other configurations available on request. Please contact your local sales representative.