

ATX™ ACSEW-X Cast Control and Distribution Centers

Flameproof

ATEX/IECEx: Zones 1 and 2 – 21 and 22
Notable: UKCA, INMETRO Certified

Application

- Designed for use in Zones 1, 2, 21 and 22, where flammable gases, vapors or dust are present either continuously or intermittently, such as:
 - Petroleum refineries
 - Chemical refineries
 - Other industrial process facilities
- Bodies can be customized to accommodate connection terminals and other electrical components.

Features

- Bodies are available in a wide range of dimensions.
- Precision machined flame path between body and cover.
- Hinged lid.
- External fixing brackets.
- Interior mounting plate.
- O-ring seals.
- Machining, drilling and assembly must be done at our factory.
- Dissipated power calculation, including cables, must be produced for each certified case size.

Standard Materials

- Bodies and covers: sand cast copperfree (4/10 of 1% max.) aluminum
- Screws: stainless steel
- O-ring: neoprene
- Hinges: stainless steel
- Mounting plate: Galvanized steel

Standard Finish

- Bodies and covers: shot blast finish

Options

- Custom drilling and tapping is available.
- There are many options for customized enclosures not limited to: terminal strips, selector switches, operators, transformers, etc. Please contact your local representative for more information.

ATEX/IECEx Certifications and Compliances

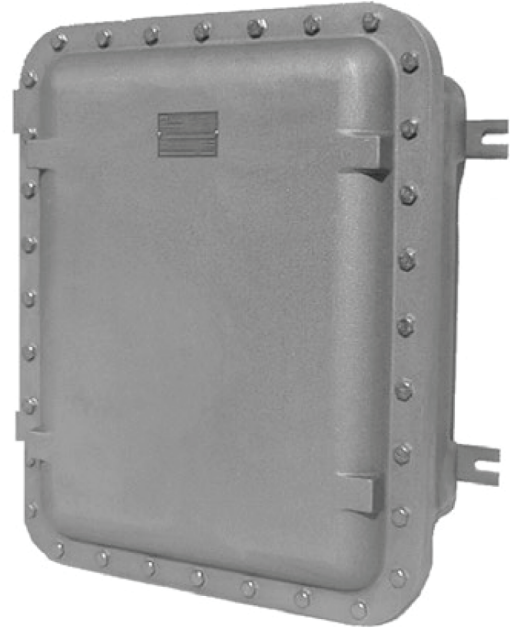
- Certification Type: JBEW
 - Gas, Zones 1 and 2
 - Conforming to ATEX 2014/34/EU: Ⓢ II 2 G
 - Type of Protection: Ex db IIB + H2 Gb
 - Temperature Class: T6 to T4
 - Dust, Zones 21 and 22
 - Conforming to ATEX 2014/34/EU: Ⓢ II 2 D
 - Type of Protection: Ex tb IIIC Db
 - Surface Temperature: T78 °C to T129 °C (T 172.4 °F to T264.2 °F)
 - Ambient Temperature: -40 °C to +60 °C (-40 °F to +140 °F) (depending on the components)
 - ATEX Certificate: LCIE 07 ATEX 6069X
 - IECEx Certificate: IECEx LCI 07.0018X
 - Index of Protection according EN/IEC 60529: IP66

UKCA Certification

- UKCA Certificate: CML 22UKEX1708X

INMETRO Certification

- INMETRO Certificate: BVC23.4218-X



ATX™ ACSEW-X Cast Control and Distribution Centers

Flameproof

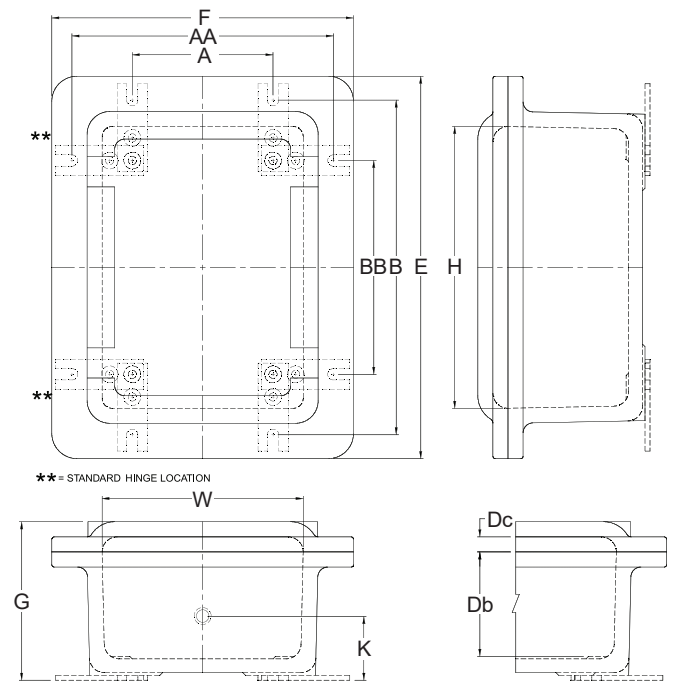
ATEX/IECEx: Zones 1 and 2 – 21 and 22
 Notable: UKCA, INMETRO Certified

Enclosures — Dimensions in Millimeters (Inches)

Overall Dimensions			Mounting Dimensions				Inside Dimensions					Approximate Weight Kgs (lbs)	Catalog Number
F	E	G	A	AA	B	BB	W	H	Db	Dc	K		
260.0 (10.24)	260.0 (10.24)	161.5 (6.36)	N/A	N/A	N/A	N/A	N/A	N/A	N/A	N/A	N/A	10.0 (22.05)	ACSEW060604X#
376.2 (14.81)	376.2 (14.81)	231.9 (9.13)	165.1 (4.56)	273.8 (10.78)	330.2 (13.00)	114.3 (4.50)	260.4 (10.25)	260.4 (10.25)	146.1 (5.75)	38.1 (1.50)	85.9 (3.38)	20.0 (44.09)	ACSEW101006X#
368.3 (14.50)	469.9 (18.50)	244.6 (9.63)	N/A	330.2 (13.00)	N/A	270.0 (10.63)	254.0 (10.00)	355.6 (14.00)	196.9 (7.75)	19.1 (0.75)	112.8 (4.44)	27.2 (59.97)	ACSEW101408X#
492.3 (19.38)	492.3 (19.38)	293.6 (11.58)	247.7 (9.75)	450.9 (17.75)	450.9 (17.75)	247.7 (9.75)	374.7 (14.75)	374.7 (14.75)	196.9 (7.75)	35.1 (1.38)	101.6 (4.00)	47.6 (104.94)	ACSEW141408X#
543.1 (21.38)	593.9 (23.38)	382.5 (15.06)	304.8 (12.00)	482.6 (19.00)	533.4 (21.00)	355.6 (14.00)	412.8 (16.25)	463.6 (18.25)	301.8 (11.88)	9.7 (0.38)	177.8 (7.00)	68.0 (149.91)	ACSEW161812X#
593.9 (23.38)	593.9 (23.38)	303.3 (11.94)	330.2 (13.00)	552.5 (21.75)	552.5 (21.75)	330.2 (13.00)	463.6 (18.25)	463.6 (18.25)	196.9 (7.75)	38.1 (1.50)	114.3 (4.50)	89.8 (197.98)	ACSEW181808X#
608.1 (23.94)	762.0 (30.00)	360.2 (14.18)	409.7 (16.13)	552.5 (21.75)	704.9 (27.75)	466.9 (18.38)	463.6 (18.25)	614.4 (24.19)	247.7 (9.75)	38.1 (1.50)	146.1 (5.75)	106.6 (235.01)	ACSEW182410X#
596.9 (23.50)	1060.5 (41.75)	363.5 (14.31)	279.4 (11.00)	552.5 (21.75)	1003.3 (39.50)	736.6 (29.00)	463.6 (18.25)	927.1 (36.50)	247.7 (9.75)	38.1 (1.50)	139.7 (5.50)	122.5 (270.07)	ACSEW183610X#
746.3 (29.38)	746.3 (29.38)	312.7 (12.31)	466.9 (18.38)	711.2 (28.00)	711.2 (28.00)	466.9 (18.38)	622.3 (24.50)	622.3 (24.50)	196.9 (7.75)	38.1 (1.50)	127.0 (5.00)	102.1 (225.09)	ACSEW242408X#
781.1 (30.75)	1092.2 (43.00)	382.5 (15.06)	463.6 (18.25)	711.2 (28.00)	1016.0 (40.00)	736.6 (29.00)	616.0 (24.25)	920.8 (36.25)	247.7 (9.75)	41.4 (1.63)	152.4 (6.00)	204.1 (449.96)	ACSEW243610X#
914.4 (36.00)	1117.6 (44.00)	349.3 (13.75)	N/A	889.0 (35.00)	N/A	736.6 (29.00)	762.0 (30.00)	965.2 (38.00)	196.9 (7.75)	50.8 (2.00)	155.7 (6.13)	272.2 (600.10)	ACSEW303808X#

Mounting Pans — Overall Dimensions in Millimeters (Inches)

Junction Box Catalog Number	W	H	Mounting Pan Catalog Number
ACSEW101006X	190.5 (7.50)	190.5 (7.50)	AZ-10104/6
ACSEW101408X	228.6 (9.00)	330.2 (13.00)	AZ-10146/8
ACSEW141408X	311.2 (12.25)	311.2 (12.25)	AZ-14146/8
ACSEW161812X	381.0 (15.00)	406.4 (16.00)	AZ-161812
ACSEW181808X	406.4 (16.00)	406.4 (16.00)	AZ-18186/8
ACSEW182410X	406.4 (16.00)	558.8 (22.00)	AZ-18248/10
ACSEW183610X	431.8 (17.00)	882.7 (34.75)	AZ-18368/10
ACSEW242408X	558.8 (22.00)	558.8 (22.00)	AZ-24248/10
ACSEW243610X	558.8 (22.00)	863.6 (34.00)	AZ-24368/10
ACSEW303808X	711.2 (28.00)	914.4 (36.00)	AZ-30388



Control Stations and Panels