

APDAC/APDSC Series Enclosures and Junction Boxes

Flameproof

ATEX/IECEX: Zones 1 and 2 – 21 and 22

Applications

- Small terminal junction boxes designed to facilitate electrical connections in hazardous areas.
- Designed for use in Zone 1 or 2 areas, where flammable gases or vapors are present either continuously or intermittently.
- Ideal for use in wet or corrosive atmospheres, such as:
 - Petroleum refineries
 - Chemical refineries
 - Other industrial process facilities
- Designed for use in Zone 21 or 22 areas, where flammable dusts are present either continuously or intermittently, such as:
 - Food processing
 - Dairy
 - Brewing
 - Silos
 - Other facilities



APD_C13

Features

- High impact resistant box.
- Pillar/Screw type terminal block up to 16 sq.mm is available in standard sizes.
- Internal Earth: one of the mounting holes for terminals is provided with M5 Screws.
- External Earth: M5 screw.
- Back plate supplied as option.
- Operating temperature -20 °C to +55 °C (-4 °F to +131 °F).
- Empty enclosures with 'U' certification marking for re-certification is available.
- Electrical data:
 - Maximum voltage: AC, 690 Vac/440 Vdc
 - Current rating: 50 Vac/Vdc

Standard Material

- Housing: aluminum; 304/316L stainless steel available on request
- Hardware: stainless steel

Standard Finishes

- Housing: marine grade gray epoxy powder coat.

ATEX/IECEX Certifications and Compliances

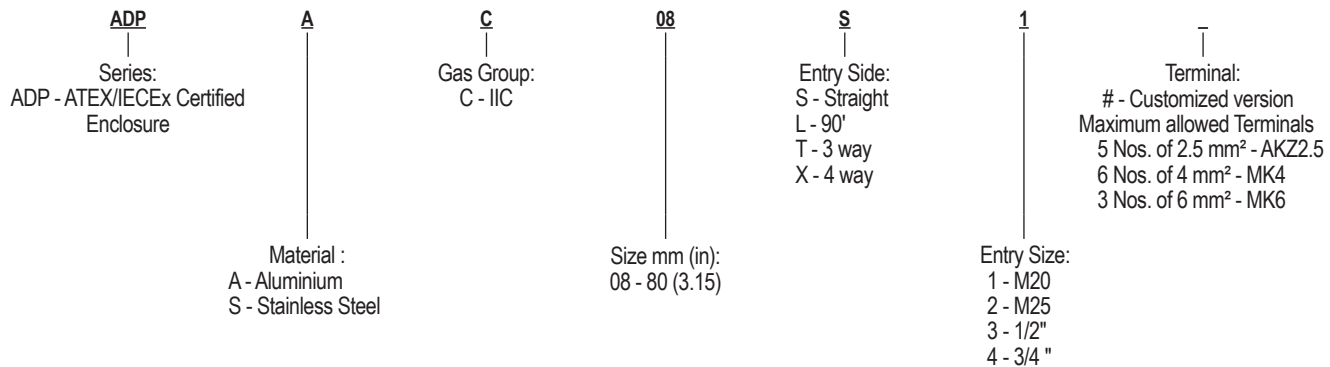
- Certification Type: APDAC/APDSC
 - Gas, Zones 1 and 2:
 - Conforming to Directive ATEX 94/9/CE: Ⓢ II 2 G
 - Type of Protection: Ex db IIC T* Gb
 - Temperature Class:
 - T6: 10 Watt Maximum Power Dissipation
 - T5: 20 Watt Maximum Power Dissipation
 - Dust, Zones 21 and 22:
 - Conforming to Directive ATEX 94/9/CE: Ⓢ II 2 D
 - Type of Protection: Ex tb IIIC T* Db
 - Surface Temperature: T75 °C to T90 °C (T167 °F to T194 °F)
 - T75 °C: 10 Watt Maximum Power Dissipation
 - T90 °C: 20 Watt Maximum Power Dissipation
 - Ambient Temperature: -20 °C ≤ to ≤ +55 °C (-4 °F ≤ to ≤ +131 °F)
- ATEX Certificate: ExVeritas 19ATEX 0523X;
ExVeritas 19ATEX 0524U
- IECEx Certificate: IECEx EXV: 19.0047X; IECEx EXV 119.0048U
- Index of Protection according EN/IEC 60529: IP66
- Internal Volume: ≤ 2 dm³ (122 in³) — 2 liters

APDAC/APDSC Series Enclosures and Junction Boxes

Flameproof

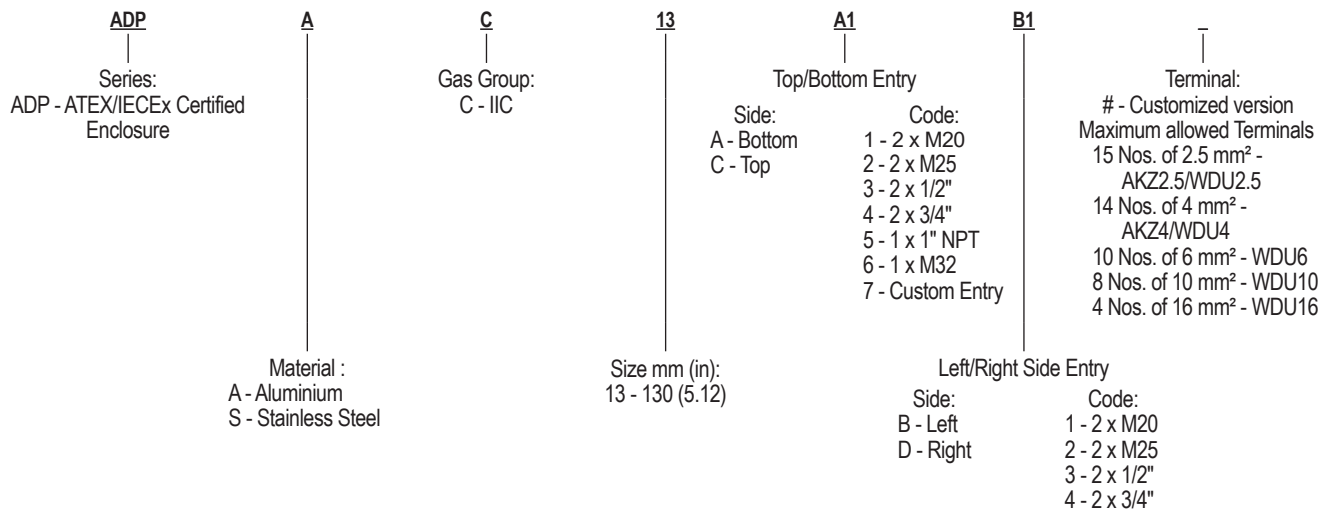
ATEX/IECEX: Zones 1 and 2 – 21 and 22

Catalog Numbering Guide — APD Series — 80 mm (3.15 in) Diameter Enclosure



Equipment	Catalog Number ①
Threaded Entries on 3 sides	
3 x M20 entries (in a "T")	APDAC 08 T1#
3 x M25 entries (in a "T")	APDAC 08 T2 #
Threaded Entries on 4 sides	
4 x M20 entries (in a cross)	APDAC 08 X1 #
4 x M25 entries (in a cross)	APDAC 08 X2 #
Customized Enclosures	
Non-standard Entry	APDAC 08 #

Catalog Numbering Guide — APD Series — 130 mm (5.12 in) Diameter Enclosure



Equipment	Catalog Number ①
Threaded Entries at Bottom	
2 Way Enclosure with M20 entry at bottom	APDAC 13 A1 #
3 Way Enclosure with 2 Nos. 3/4" entry at bottom and one no. of 3/4" entry on Left side	APDAC 13 A3 B3 #
3 Way Enclosure with 2 Nos. of M25 entry at bottom and one no. of M20 on top	APDAC 13 A2 B1 #
Customized Enclosures	
Entry on any side	APDAC 13 #

① For other configuration, contact your local sales representative.

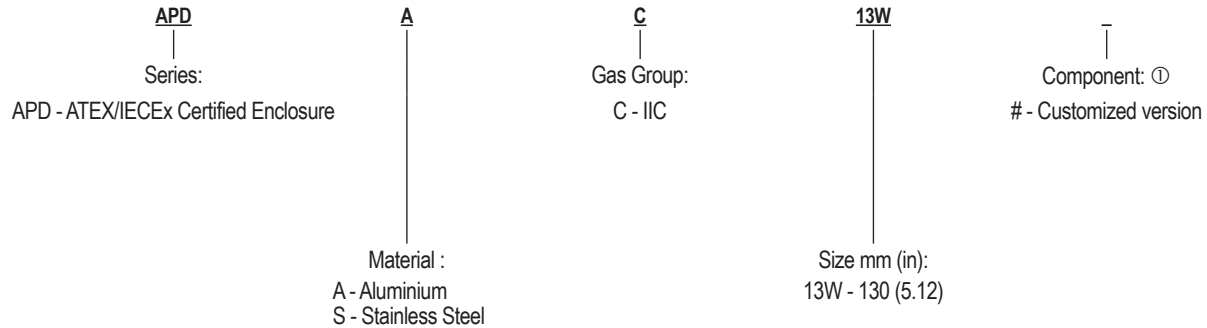
APDAC/APDSC Series Enclosures and Junction Boxes

Flameproof

ATEX/IECEX: Zones 1 and 2 – 21 and 22

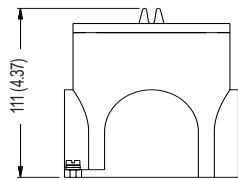
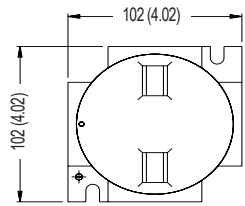
Catalog Numbering Guide — APD Series 130 mm (5.12 in) Diameter Metering Enclosure

Side A and C: Double Entry. Side B and D: Single Entry

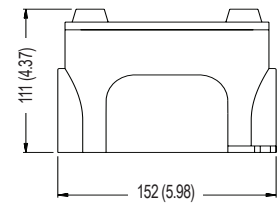
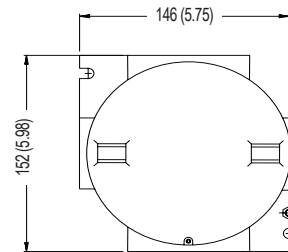


Dimensions in Millimeters (Inches)

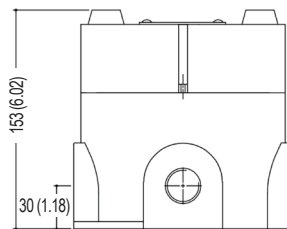
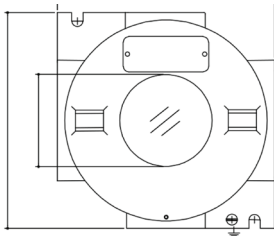
APD_C08



APD_C13



APD_C13W



Type	Internal			External		Weight kg (lb)	
	Dia Ø	Height	Length	Width	Height	Aluminum	Stainless Steel
APD_C08	80 9 (3.15)	88 (3.46)	102 (4.02)	102 (4.02)	111 (4.37)	1.10 (2.20)	3.21 (7.08)
APD_C13	130 (5.12)	88 (3.46)	152 (5.98)	152 (5.98)	111 (4.37)	1.60 (3.53)	4.70 (10.36)
APD_C13W	130 (5.12)	121 (4.76)	152 (5.98)	152 (5.98)	153 (6.02)	2.00 (4.41)	5.92 (13.05)

Enclosures and Junction Boxes