

PX2K Series Nickel Plated Brass Compound Barrier Type Cable Glands

Increased Safety, Flameproof, Restricted Breathing and Dust Locations
For Armored Cables.

NEC/CEC: Class I, Division 1 and 2, Groups A, B, C, D | Class II, Division 1 and 2, Groups E, F, G | Class III, Division 1 and 2 | Type 4X: Oil Resistant
ATEX/IECEx : Zones 1 and 2 – 20
Notable: UKEX, INMETRO, EAC Certified

Applications

- Cable gland for all types of armored cables (braid, tape, wire and lead sheath version) certified for enclosures with the following protection modes:
 - Ex d: flameproof IIB or IIC
 - Ex e: increased safety.
 - Ex nR: restricted breathing.
 - Ex d: flameproof.
- Hazardous areas (gas and dust).
- Onshore and offshore.

Features

- Cable gland with compound barrier seal for use in hazardous areas with all types of armored cables (braid, tape and wire).
- The cable gland provides mechanical cable retention and earth continuity via cable armor termination.
- The cable gland is IP66/68 and complies with deluge protection tests.

Standard Materials

- Body: nickel plated brass
- Outer seal nut: consists of an elastomeric seal and nylon identification ferrule
- Epoxy resin barrier compound

Options

- 316L stainless steel version: replace last digit 5 with 4
- Lead sheath version: Replace PX2K with PX2KPB
- Copperfree aluminum: replace last digit 5 with 1
- Shroud, locknut, earth tag, entry thread seal, serrated washers, adaptors and reducers: see Cable Gland Accessories pages.

NEC/CEC Certifications and Compliances

- UL Standard: UL 514B Ed 5, UL 50 Ed 11, UL 2225 Ed 4, UL60079
- UL Listed: E201187, E161256
- CSA Standard: CSA-C22.2 No 0,18,25,30,94,174; CSA-E60079-0,1,7,31; CSA-E61241-1-1, Part 1-1
- cCSAus Certified: 2288626

ATEX/IECEx Certifications and Compliances

- Certification Type: Type PX**
 - Gas: Zones 1 and 2
 - Type of Protection: Ex db IIC Gb, Ex eb IIC Gb, Ex nR IIC Gc
 - Dust: Zone 20
 - Type of Protection: Ex ta IIIC Da
- Conforming to ATEX 2014/34/EU: Ⓢ II 2G 3G 1D
- Ambient Temperature: -60 °C to +85 °C (-76 °F to +185 °F)
- ATEX Certificate: CML 18ATEX1325X, CML 18ATEX4317X
- IECEx Certificate: IECEx CML 18.0182X
- Index of Protection according EN/IEC 60529: IP66, IP67, IP68
- Deluge Protection Compliance: DTS01:91

Cable Gland Size	Catalog Numbers						Maximum Number of Cores
	Metric Thread C	Standard Metric ①	Standard NPT Thread C	Standard NPT ①	Optional NPT Thread C	Optional NPT Thread ①	
20S16	M20	2016PX2K5	1/2	2016PX2K0505	3/4	2016PX2K0505	21
20S	M20	20SPX2K5	1/2	20SPX2K0505	3/4	20SPX2K0755	21
20	M20	20PX2K5	1/2	20PX2K0505	3/4	20PX2K0755	21
25S	M25	25SPX2K5	3/4	25SPX2K0755	1	25SPX2K1005	30
25	M25	25PX2K5	3/4	25PX2K0755	1	25PX2K1005	30
32	M32	32PX2K5	1	32PX2K1005	1-1/4	32PX2K1255	38
40	M40	40PX2K5	1-1/4	40PX2K1255	1-1/2	40PX2K1505	59
50S	M50	50SPX2K5	1-1/2	50SPX2K1505	2	50SPX2K2005	89
50	M50	50PX2K5	2	50PX2K2005	2-1/2	50PX2K2505	115
63S	M63	63SPX2K5	2	63SPX2K2005	2-1/2	63SPX2K2505	115
63	M63	63PX2K5	2-1/2	63PX2K2505	3	63PX2K3005	115
75S	M75	75SPX2K5	2-1/2	75SPX2K2505	3	75SPX2K3005	140
75	M75	75PX2K5	3	75PX2K3005	3-1/2	75PX2K3505	140
90	M90	90PX2K5	3-1/2	90PX2K3505	4	90PX2K4005	140

① Entry thread seal not supplied, see Cable Gland Accessories and Tools.

PX2K Series Nickel Plated Brass Compound Barrier Type Cable Glands

Increased Safety, Flameproof, Restricted Breathing and Dust Locations
For Armored Cables.

NEC/CEC: Class I, Division 1 and 2, Groups A, B, C, D | Class II, Division 1 and 2, Groups E, F, G | Class III, Division 1 and 2 | Type 4X: Oil Resistant
ATEX/IECEx : Zones 1 and 2 – 20
Notable: UKEX, INMETRO, EAC Certified

UKEX Certifications

- UKEX Certificates: CML 21UKEX1214X, CML 21UKEX4215X

INMETRO Certifications

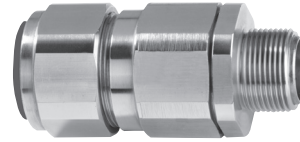
- INMETRO Certificate: TUV 12.2073X, for INMETRO marking, add B after PX. Example: 20PX2KB5

EAC Certifications

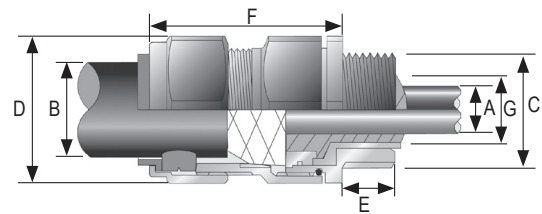
- EAC Certificate: C-GB.A07.B.04595/22; for EAC marking, add U after PX. Example: 20PX2KU5

Other Certifications

- KCs, CCC, CCOE/PESO (India), ECAS (UAE), UkrSEPRO (Ukraine)
- Marine Approval: LLOYDS, DNV, ABS



Dimensions in Millimeters (Inches)



Cable Gland Size	Thread Length mm (in) E		Cable Bedding mm (in) A		Overall Cable Diameter mm (in) B		Across Flats mm (in) D Max.	Across Corners mm (in) D Max.	Nominal Protrusion Length mm (in) F	Optional PVC Shroud	Weight (kg (oz))
	Metric	NPT	Metric	NPT	Min.	Max.					
20S16	15.0 (0.59)	19.9 (0.78)	11.7 (0.46)	11.70 (0.46)	6.1 (0.24)	13.1 (0.52)	30.5 (1.20)	33.6 (1.32)	62.0 (2.44)	PVC06	0.24 (8.47)
20S	15.0 (0.59)	19.9 (0.78)	11.7 (0.46)	11.70 (0.46)	9.5 (0.37)	15.9 (0.63)	30.5 (1.20)	33.6 (1.32)	62.0 (2.44)	PVC06	0.23 (8.11)
20	15.0 (0.59)	19.9 (0.78)	12.6 (0.50)	12.90 (0.51)	12.5 (0.49)	20.9 (0.82)	30.5 (1.20)	33.6 (1.32)	63.0 (2.48)	PVC06	0.24 (8.47)
25S	15.0 (0.59)	20.2 (0.80)	17.5 (0.69)	17.90 (0.70)	14.0 (0.55)	22.0 (0.87)	37.5 (1.48)	41.3 (1.63)	69.5 (2.74)	PVC09	0.37 (13.05)
25	15.0 (0.59)	20.2 (0.80)	17.5 (0.69)	17.90 (0.70)	18.2 (0.72)	26.2 (1.03)	37.5 (1.48)	41.3 (1.63)	69.5 (2.74)	PVC09	0.37 (13.05)
32	15.0 (0.59)	25.0 (0.98)	23.6 (0.93)	23.90 (0.94)	23.7 (0.93)	33.9 (1.33)	46.0 (1.81)	50.6 (1.99)	75.0 (2.95)	PVC11	0.57 (20.11)
40	15.0 (0.59)	25.0 (0.98)	30.0 (1.18)	30.30 (1.19)	27.9 (1.10)	40.4 (1.59)	55.0 (2.17)	60.5 (2.38)	75.0 (2.95)	PVC15	0.80 (28.22)
50S	15.0 (0.59)	25.6 (1.01)	36.6 (1.44)	36.90 (1.45)	35.2 (1.39)	46.7 (1.84)	60.0 (2.36)	66.0 (2.60)	77.0 (3.03)	PVC18	0.90 (31.75)
50	15.0 (0.59)	26.1 (1.03)	41.0 (1.61)	41.30 (1.63)	40.4 (1.59)	53.0 (2.09)	70.0 (2.76)	77.0 (3.03)	77.0 (3.03)	PVC21	1.19 (41.98)
63S	15.0 (0.59)	26.9 (1.06)	47.9 (1.89)	48.40 (1.91)	45.6 (1.80)	59.4 (2.34)	75.0 (2.96)	82.5 (3.25)	79.7 (3.14)	PVC23	1.39 (49.03)
63	15.0 (0.59)	26.9 (1.06)	53.7 (2.11)	54.00 (2.13)	54.6 (2.15)	65.8 (2.59)	80.0 (3.15)	88.0 (3.47)	80.3 (3.16)	PVC25	1.41 (49.74)
75S	15.0 (0.59)	39.9 (1.57)	59.9 (2.36)	60.20 (2.37)	59.0 (2.32)	72.0 (2.83)	90.0 (3.55)	99.0 (3.90)	86.8 (3.42)	PVC28	2.09 (73.72)
75	15.0 (0.59)	39.9 (1.57)	64.3 (2.53)	64.20 (2.53)	66.7 (2.63)	78.4 (3.09)	100.0 (3.94)	110.0 (4.33)	88.3 (3.48)	PVC30	2.54 (89.60)
90	20.0 (0.79)	41.5 (1.63)	75.3 (2.96)	75.60 (2.98)	76.2 (3.00)	90.3 (3.56)	115.0 (4.53)	126.5 (4.98)	102.1 (4.02)	PVC32	3.71 (130.87)

Hazardous Location Fittings