

E1FW Series Nickel Plated Brass Cable Glands

Increased Safety, Flameproof, Restricted Breathing and Dust Locations For Armoured Cables (SWA With Wire).

NEC/CEC: Class I, Division 2, Groups A, B, C, D | Class II, Division 2, Groups E, F, G | Class III | Enclosure Type 4X | Ex d IIC | Ex e IIC | Ex nR II
ATEX/IECEx : Zones 1 and 2 – 20
Notable: UKEX, INMETRO, EAC Certified

Applications

- Cable gland for single wire armored cables (SWA with wire and lead sheath) certified for enclosures with the following protection modes:
 - Ex d: flameproof IIB or IIC
 - Ex e: increased safety
 - Ex nR: restricted breathing
 - D: dust environment
- Hazardous areas (gas and dust).
- Onshore and offshore.

Features

- Cable gland with elastomer seal for use in hazardous areas with single wire armor (SWA) cable.
- The cable gland allows mechanical cable retention and earth continuity via cable armor termination.
- A detachable armor cone and AnyWay clamping ring arrangement facilitates remote make off and enables cable to be disconnected from the equipment.
- Inspection of the armor can be carried out while still maintaining the protection mode of the enclosure.

Standard Materials

- Body: nickel plated brass
- Seal: SOLO LSF (low smoke and fume) halogen free thermoset elastomer

Options

- Lead sheath version: replace digit E1 with E2; example: 32E1FW5 - 32E2FW5
- Copperfree aluminum: replace last digit 5 with 1
- Shroud, locknut, earth tag, entry thread seal, serrated washers, adaptors and reducers: see Cable Gland Accessories pages.

NEC/CEC Certifications and Compliances

- cCSAus Certified: 1310517

ATEX/IECEx Certifications and Compliances

- Certification Type: Type E**
 - Gas: Zones 1 and 2
 - Type of Protection: Ex db eb IIC Gb, Ex nR IIC Gc
 - Dust: Zone 20
 - Type of Protection: Ex ta IIIC Da
- Conforming to ATEX 2014/34/EU: Ⓢ II 2G 3G 1D
- Ambient Temperature: -60 °C to +130 °C (-76 °F to +266 °F)
- ATEX Certificate: CML 18ATEX1324X, CML 18ATEX4316X
- IECEx Certificate: IECEx CML 18.0181X
- Index of Protection according EN/IEC 60529: IP66 (IP67, IP68 available on request)
- Impact Resistance: IK10
- Deluge Protection Compliance: DTS01:91 (available on request)

Cable Gland Size	Catalog Numbers		Standard NPT Thread C	Standard NPT ①	Optional NPT Thread C	Optional NPT Thread ①
	Metric Thread C	Standard Metric ①				
20S16	M20	2016E1FW5	1/2"	2016E1FW0505	3/4"	2016E1FW0755
20S	M20	20SE1FW5	1/2"	20SE1FW0505	3/4"	20SE1FW0755
20	M20	20E1FW5	1/2"	20E1FW0505	3/4"	20E1FW0755
25S	M25	25SE1FW5	3/4"	25SE1FW0755	1"	25SE1FW1005
25	M25	25E1FW5	3/4"	25E1FW0755	1"	25E1FW1005
32	M32	32E1FW5	1"	32E1FW1005	1-1/4"	32E1FW1255
40	M40	40E1FW5	1-1/4"	40E1FW1255	1-1/2"	40E1FW1505
50S	M50	50SE1FW5	1-1/2"	50SE1FW1505	2"	50SE1FW1505
50	M50	50E1FW5	2"	50E1FW2005	2-1/2"	50E1FW2505
63S	M63	63SE1FW5	2"	63SE1FW2005	2-1/2"	63SE1FW2505
63	M63	63E1FW5	2-1/2"	63E1FW2505	3"	63E1FW3005
75S	M75	75SE1FW5	2-1/2"	75SE1FW2505	3"	75SE1FW3005
75	M75	75E1FW5	3"	75E1FW3005	3-1/2"	75E1FW3505
90	M90	90E1FW5	3-1/2"	90E1FW3505	4"	90E1FW4005
100	M100	100E1FW5	3-1/2"	100E1FW3505	4"	100E1FW4005
115	M115	115E1FW5	4"	115E1FW4005	5"	115E1FW5005
130	M130	130E1FW5	5"	130E1FW5005	—	—

① Entry thread seal not supplied, see Cable Gland Accessories and Tools.

E1FW Series Nickel Plated Brass Cable Glands

Increased Safety, Flameproof, Restricted Breathing and Dust Locations
For Armoured Cables (SWA With Wire).

NEC/CEC: Class I, Division 2, Groups A, B, C, D | Class II, Division 2, Groups E, F, G | Class III | Enclosure Type 4X | Ex d IIC | Ex e IIC | Ex nR II
ATEX/IECEx : Zones 1 and 2 – 20
Notable: UKEX, INMETRO, EAC Certified

UKEX Certifications

- UKEX Certificates: CML 21UKEX1252X, CML 21UKEX4253X

INMETRO Certifications

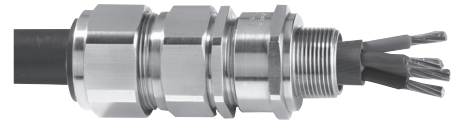
- INMETRO Certificate: TUV 12.0618X, for INMETRO marking, add B after E1FW. Example: 20E1FWB5

EAC Certifications

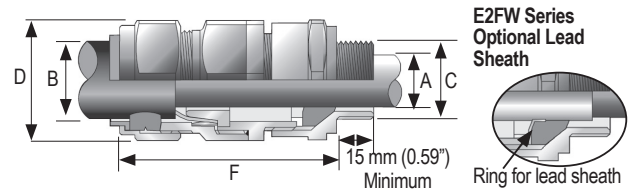
- EAC Certificate: C-GB.A07.B.02515/20; for EAC marking, add U after E1FW. Example: 20E1FWU5

Other Certifications

- KCs, CCC, CCOE/PESO (India), ECAS (UAE), UkrSEPRO (Ukraine)
- Marine Approval: LLOYDS, DNV, ABS



Dimensions in Millimeters (Inches)



Cable Gland Size	Thread Length mm (in) E		Cable Bedding Diameter mm (in) A		Overall Cable Diameter mm (in) B		Across Flats mm (in) D Max.	Across Corners mm (in) D Max.	Nominal Protrusion Length mm (in) F	Optional PVC Shroud	Weight kg (oz)
	Metric	NPT	Min.	Max.	Min.	Max.					
20S16	15.0 (0.59)	19.9 (0.78)	3.1 (0.12)	8.6 (0.34)	6.1 (0.24)	13.1 (0.52)	24.0 (0.95)	26.4 (1.04)	72.5 (2.85)	PVC04	0.16 (5.64)
20S	15.0 (0.59)	19.9 (0.78)	6.1 (0.24)	11.6 (0.46)	9.5 (0.37)	15.9 (0.63)	24.0 (0.95)	26.4 (1.04)	70.0 (2.76)	PVC04	0.15 (5.29)
20	15.0 (0.59)	19.9 (0.78)	6.5 (0.26)	13.9 (0.55)	12.5 (0.49)	20.9 (0.82)	30.5 (1.20)	33.6 (1.32)	73.0 (2.87)	PVC06	0.21 (7.41)
25S	15.0 (0.59)	20.2 (0.80)	11.1 (0.44)	19.9 (0.78)	14.0 (0.55)	22.0 (0.87)	37.5 (1.48)	41.3 (1.63)	89.0 (3.50)	PVC09	0.33 (11.64)
25	15.0 (0.59)	20.2 (0.80)	11.1 (0.44)	19.9 (0.78)	18.2 (0.72)	26.2 (1.03)	37.5 (1.48)	41.3 (1.63)	89.0 (3.50)	PVC09	0.33 (11.64)
32	15.0 (0.59)	25.0 (0.98)	17.0 (0.67)	26.2 (1.03)	23.7 (0.93)	33.9 (1.33)	46.0 (1.81)	50.6 (1.99)	86.0 (3.39)	PVC11	0.43 (15.17)
40	15.0 (0.59)	25.6 (1.01)	22.0 (0.87)	32.1 (1.26)	27.9 (1.10)	40.4 (1.59)	55.0 (2.17)	60.5 (2.38)	90.0 (3.54)	PVC15	0.62 (21.87)
50S	15.0 (0.59)	26.1 (1.03)	29.5 (1.16)	38.1 (1.50)	35.2 (1.39)	46.7 (1.84)	60.0 (2.36)	66.0 (2.60)	91.0 (3.58)	PVC18	0.75 (26.46)
50	15.0 (0.59)	26.9 (1.06)	35.6 (1.40)	44.0 (1.73)	40.4 (1.59)	53.0 (2.09)	70.1 (2.76)	77.1 (3.04)	95.0 (3.74)	PVC21	0.95 (33.51)
63S	15.0 (0.59)	26.9 (1.06)	40.1 (1.58)	49.9 (1.96)	45.6 (1.80)	59.4 (2.34)	75.0 (2.96)	82.5 (3.25)	102.0 (4.02)	PVC23	1.34 (47.27)
63	15.0 (0.59)	39.9 (1.57)	47.2 (1.86)	55.9 (2.20)	54.6 (2.15)	65.8 (2.59)	80.0 (2.96)	88.0 (3.25)	104.0 (4.09)	PVC25	1.34 (47.27)
75S	15.0 (0.59)	39.9 (1.57)	52.8 (2.08)	61.9 (2.44)	59.0 (2.32)	72.0 (2.83)	90.0 (3.55)	99.0 (3.90)	115.0 (4.53)	PVC28	2.11 (74.43)
75	15.0 (0.59)	41.5 (1.63)	59.1 (2.33)	67.9 (2.67)	66.7 (2.63)	78.4 (3.09)	100.0 (3.94)	110.0 (4.33)	117.0 (4.61)	PVC30	2.42 (85.36)
90	24.0 (0.94)	42.8 (1.69)	66.6 (2.62)	78.6 (3.09)	76.2 (3.00)	90.3 (3.56)	114.3 (4.50)	125.4 (4.95)	147.0 (5.79)	PVC32	4.21 (148.50)
100	24.0 (0.94)	42.8 (1.69)	76.0 (2.99)	90.9 (3.58)	86.1 (3.39)	101.4 (3.99)	123.0 (4.85)	135.3 (5.33)	140.0 (5.51)	LSF33	4.45 (156.97)
115	24.0 (0.94)	44.0 (1.73)	86.0 (3.39)	97.9 (3.85)	101.5 (4.00)	110.2 (4.34)	133.4 (5.26)	146.7 (5.78)	162.0 (6.38)	LSF34	6.19 (218.35)
130	24.0 (0.94)	46.8 (1.84)	97.0 (3.82)	114.9 (4.52)	110.2 (4.34)	123.2 (4.85)	152.4 (6.00)	167.6 (6.60)	174.0 (6.85)	LSF35	8.34 (294.19)

Hazardous Location Fittings