

E1FU Series Triple Certified Cable Glands

Increased Safety, Flameproof, Restricted Breathing and Dust Locations
For Armored Cables.

NEC/CEC: Class I, Division 2, Groups A, B, C, D | Class II, Division 2, Groups E, F, G | Class III | Enclosure Type 4X | Ex d IIC | Ex e IIC | Ex nR II
ATEX/IECEx : Zones 1 and 2 – 20
Notable: UKEX, INMETRO, EAC Certified

Applications

- Cable gland for armored cables (SWA, braid, tape) certified for enclosures with the following protection modes:
 - Ex d: flameproof IIB or IIC
 - Ex e: increased safety
 - Ex nR: restricted breathing
 - D: dust environment
- Hazardous areas (gas and dust).
- Onshore and offshore.

Features

- Provides a gas tight seal permitting the compatibility of use with restricted breathing (Type "nR") equipment.
- Allows mechanical cable retention and earth continuity via the cable armor termination.
- Reversible armor cone and AnyWay clamping ring arrangement facilitates remote make off and enables the cable to be disconnected from the equipment.
- Stepped cone is suitable for SWA cables. Grooved cone is suitable for all other approved armored cables.

Standard Materials

- Body: nickel plated brass
- Seal: SOLO LSF (low smoke and fume) halogen free thermoset elastomer

Options

- Lead sheath version: replace digit E1 with E2; example: 32E1FU5 - 32E2FU5
- Aluminum: replace last digit 5 with 1
- Shroud, locknut, earth tag, entry thread seal, serrated washers, adaptors and reducers: see Cable Gland Accessories pages.

NEC/CEC Certifications and Compliances

- cCSAus Certified: 1310517

ATEX/IECEx Certifications and Compliances

- Certification Type: Type E**
 - Gas: Zones 1 and 2
 - Type of Protection: Ex db eb IIC Gb, Ex nR IIC Gc
 - Dust: Zone 20
 - Type of Protection: Ex ta IIIC Da
- Conforming to ATEX 2014/34/EU: Ⓢ II 2G 3G 1D
- Ambient Temperature: -60 °C to +130 °C (-76 °F to +266 °F)
- ATEX Certificate: CML 18ATEX1324X, CML 18ATEX4316X
- IECEx Certificate: IECEx CML 18.0181X
- Index of Protection according EN/IEC 60529: IP66 (IP67, IP68 available on request)
- Impact Resistance: IK10
- Deluge Protection Compliance: DTS01:91 (available on request)

Catalog Numbers						
Cable Gland Size	Metric Thread C	Standard Metric ①	Standard NPT Thread C	Standard NPT ①	Optional NPT Thread C	Optional NPT Thread ①
20S16	M20	2016E1FU5	1/2"	2016E1FU0505	3/4"	2016E1FU0755
20S	M20	20SE1FU5	1/2"	20SE1FU0505	3/4"	20SE1FU0755
20	M20	20E1FU5	1/2"	20E1FU0505	3/4"	20E1FU0755
25S	M25	25SE1FU5	3/4"	25SE1FU0755	1"	25SE1FU1005
25	M25	25E1FU5	3/4"	25E1FU0755	1"	25E1FU1005
32	M32	32E1FU5	1"	32E1FU1005	1-1/4"	32E1FU1255
40	M40	40E1FU5	1-1/4"	40E1FU1255	1-1/2"	40E1FU1505
50S	M50	50SE1FU5	1-1/2"	50SE1FU1505	2"	50SE1FU1505
50	M50	50E1FU5	2"	50E1FU2005	2-1/2"	50E1FU2505
63S	M63	63SE1FU5	2"	63SE1FU2005	2-1/2"	63SE1FU2505
63	M63	63E1FU5	2-1/2"	63E1FU2505	3"	63E1FU3005
75S	M75	75SE1FU5	2-1/2"	75SE1FU2505	3"	75SE1FU3005
75	M75	75E1FU5	3"	75E1FU3005	3-1/2"	75E1FU3505
90	M90	90E1FU5	3-1/2"	90E1FU3505	4"	90E1FU4005
100	M100	100E1FU5	3-1/2"	100E1FU3505	4"	100E1FU4005
115	M115	115E1FU5	4"	115E1FU4005	5"	115E1FU5005
130	M130	130E1FU5	5"	130E1FU5005	—	—

① Entry thread seal not supplied, see Cable Gland Accessories and Tools.

E1FU Series Triple Certified Cable Glands

Increased Safety, Flameproof, Restricted Breathing and Dust Locations
For Armored Cables.

NEC/CEC: Class I, Division 2, Groups A, B, C, D | Class II, Division 2, Groups E, F, G | Class III | Enclosure Type 4X | Ex d IIC | Ex e IIC | Ex nR II
ATEX/IECEx : Zones 1 and 2 – 20
Notable: UKEX, INMETRO, EAC Certified

UKEX Certifications

- UKEX Certificates: C-GB.A07.B.02515/20

INMETRO Certifications

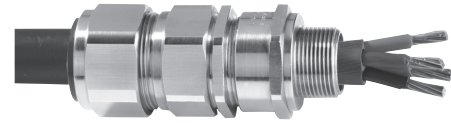
- INMETRO Certificate: TUV 12.0618X, for INMETRO marking, add B after E1FX. Example: 20E1FXB5

EAC Certifications

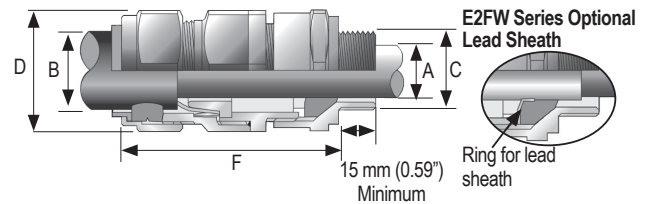
- EAC Certificate: C-GB.A07.B.02519/20; for EAC marking, add U after E1FX. Example: 20E1FXU5

Other Certifications

- KCs, CCC, CCOE/PESO (India), ECAS (UAE), UkrSEPRO (Ukraine)
- Marine Approval: LLOYDS, DNV, ABS



Dimensions in Millimeters (Inches)



Cable Gland Size	Thread Length mm (in) E		Cable Bedding mm (in) A		Overall Cable Diameter mm (in) B		Across Flats (mm (in) D Max.	Across Corners (mm (in) D Max.	Nominal Protusion Length (mm (in) F	Optional PVC Shroud	Weight (kg (oz)
	Metric	NPT	Metric	NPT	Min.	Max.					
20S16	15,0 (0,59)	19,9 (0,78)	3,1 (0,12)	8,6 (0,34)	6,1 (0,24)	13,1 (0,52)	24,0 (0,95)	26,4 (1,04)	72,5 (2,85)	PVC04	0,16 (5,64)
20S	15,0 (0,59)	19,9 (0,78)	6,1 (0,24)	11,6 (0,46)	9,5 (0,37)	15,9 (0,63)	24,0 (0,95)	26,4 (1,04)	70,0 (2,76)	PVC04	0,15 (5,29)
20	15,0 (0,59)	19,9 (0,78)	6,5 (0,26)	13,9 (0,55)	12,5 (0,49)	20,9 (0,82)	30,5 (1,20)	33,6 (1,32)	73,0 (2,87)	PVC06	0,21 (7,41)
25S	15,0 (0,59)	20,2 (0,80)	11,1 (0,44)	19,9 (0,78)	14,0 (0,55)	22,0 (0,87)	37,5 (1,48)	41,3 (1,63)	89,0 (3,50)	PVC09	0,33 (11,64)
25	15,0 (0,59)	20,2 (0,80)	11,1 (0,44)	19,9 (0,78)	18,2 (0,72)	26,2 (1,03)	37,5 (1,48)	41,3 (1,63)	89,0 (3,50)	PVC09	0,33 (11,64)
32	15,0 (0,59)	25,0 (0,98)	17,0 (0,67)	26,2 (1,03)	23,7 (0,93)	33,9 (1,33)	46,0 (1,81)	50,6 (1,99)	86,0 (3,39)	PVC11	0,43 (15,17)
40	15,0 (0,59)	25,6 (1,01)	22,0 (0,87)	32,1 (1,26)	27,9 (1,10)	40,4 (1,59)	55,0 (2,17)	60,5 (2,38)	90,0 (3,54)	PVC15	0,62 (21,87)
50S	15,0 (0,59)	26,1 (1,03)	29,5 (1,16)	38,1 (1,50)	35,2 (1,39)	46,7 (1,84)	60,0 (2,36)	66,0 (2,60)	91,0 (3,58)	PVC18	0,75 (26,46)
50	15,0 (0,59)	26,9 (1,06)	35,6 (1,40)	44,0 (1,73)	40,4 (1,59)	53,0 (2,09)	70,1 (2,76)	77,1 (3,04)	95,0 (3,74)	PVC21	0,95 (33,51)
63S	15,0 (0,59)	26,9 (1,06)	40,1 (1,58)	49,9 (1,96)	45,6 (1,80)	59,4 (2,34)	75,0 (2,96)	82,5 (3,25)	102,0 (4,02)	PVC23	1,34 (47,27)
63	15,0 (0,59)	39,9 (1,57)	47,2 (1,86)	55,9 (2,20)	54,6 (2,15)	65,8 (2,59)	80,0 (2,96)	88,0 (3,25)	104,0 (4,09)	PVC25	1,34 (47,27)
75S	15,0 (0,59)	39,9 (1,57)	52,8 (2,08)	61,9 (2,44)	59,0 (2,32)	72,0 (2,83)	90,0 (3,55)	99,0 (3,90)	115,0 (4,53)	PVC28	2,11 (74,43)
75	15,0 (0,59)	41,5 (1,63)	59,1 (2,33)	67,9 (2,67)	66,7 (2,63)	78,4 (3,09)	100,0 (3,94)	110,0 (4,33)	117,0 (4,61)	PVC30	2,42 (85,36)
90	24,0 (0,94)	42,8 (1,69)	66,6 (2,62)	78,6 (3,09)	76,2 (3,00)	90,3 (3,56)	114,3 (4,50)	125,4 (4,95)	147,0 (5,79)	PVC32	4,21 (148,50)
100	24,0 (0,94)	42,8 (1,69)	76,0 (2,99)	90,9 (3,58)	86,1 (3,39)	101,4 (3,99)	123,0 (4,85)	135,3 (5,33)	140,0 (5,51)	LSF33	4,45 (156,97)
115	24,0 (0,94)	44,0 (1,73)	86,0 (3,39)	97,9 (3,85)	101,5 (4,00)	110,2 (4,34)	133,4 (5,26)	146,7 (5,78)	162,0 (6,38)	LSF34	6,19 (218,35)
130	24,0 (0,94)	46,8 (1,84)	97,0 (3,82)	114,9 (4,52)	110,2 (4,34)	123,2 (4,85)	152,4 (6,00)	167,6 (6,60)	174,0 (6,85)	LSF35	8,34 (294,19)

Hazardous Location Fittings